

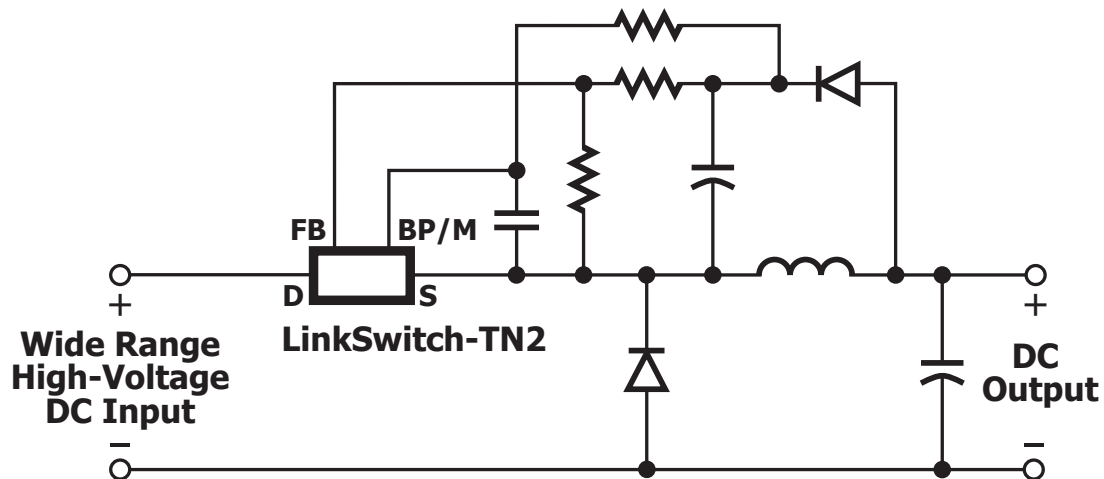
LinkSwitch™-TN2



Key Features

- Available with 725 V and robust 900 V MOSFETs
- Up to 360 mA output current
- <math><100 \mu\text{A}</math> standby current
- Excellent line and load regulation
- Low component count

Off-line Buck Switcher ICs with Integrated System-Level Protection



PI-7841-041816

Applications

- Smart LED drivers and industrial controls
- IoT, home and building automation
- Appliances
- Metering

Output Power

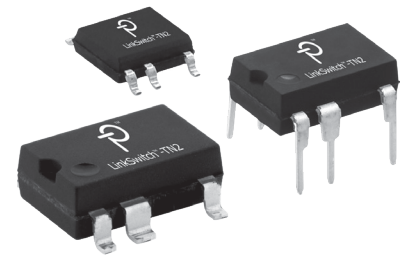
725 V MOSFET

Part Number	230 VAC ±15%		85–265 VAC	
	MDCM (mA)	CCM (mA)	MDCM (mA)	CCM (mA)
LNK3202P/G/D	63	80	63	80
LNK3204P/G/D	120	170	120	170
LNK3205P/G/D	175	270	175	270
LNK3206P/G/D	225	360	225	360

900 V MOSFET

Part Number	230 VAC ±15%		85–265 VAC	
	MDCM (mA)	CCM (mA)	MDCM (mA)	CCM (mA)
LNK3294P/G	120	170	120	170
LNK3296P/G	225	360	225	360

MDCM Maximum Discontinuous Conduction Mode
CCM Continuous Conduction Mode



Package Options
P = PDIP-8C / G = SMD-8C / D = SO-8C

Design Support

- Data Sheet [LinkSwitch-TN2 data sheet \(http://bit.ly/2ONtiTR\)](http://bit.ly/2ONtiTR)
- Reference Design [Low standby current, non-isolated flyback power supply \(RDR-623\) \(http://bit.ly/2yAmaAr\)](http://bit.ly/2yAmaAr)
- Application Note [LinkSwitch-TN2 design guide \(AN-70\) \(http://bit.ly/2RDOTgk\)](http://bit.ly/2RDOTgk)