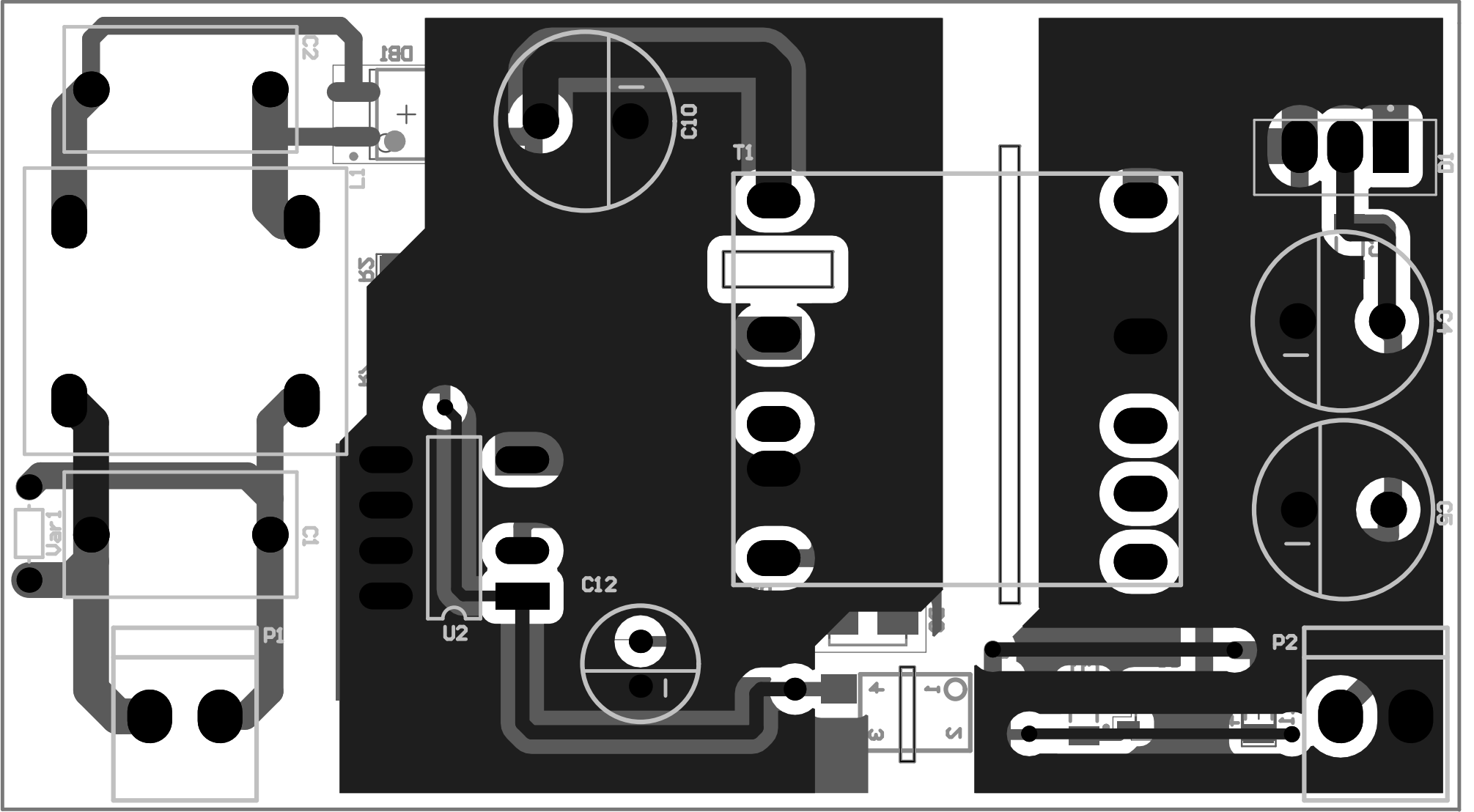


Title		
Size	Number	Revision
A		
Date:	6/14/2021	Sheet of
File:	Z:\Projects\...\TNY278.SchDoc	Drawn By:



Item #	mn Name Error:Manufa	#Column Name Error:Manufacturer No	Quantity	#Column Name Error>Note	Designator	Description	Footprint	Comment	LibRef
1			2		C1, C2	Capacitor 17*6mm	220nF/400v	220nF	0.47uf 400v
2			2		C3, C7	Bipolar Capacitor	SMD_CAP_1206	1nF	Cap-Bipolar
3			1		C4	Polarized Capacitor (Radial)	Cap 470uF	1000uF	Cap Pol1
4			1		C5	Polarized Capacitor (Radial)	Cap 470uF	470uF	Cap Pol1
5			1		C6	Bipolar Capacitor	SMD_CAP_1206	N.C	Cap-Bipolar
6			4		C8, C9, C11, C13	Bipolar Capacitor	SMD_CAP_1206	100nF	Cap-Bipolar
7			1		C10	Polarized Capacitor (Radial)	Cap 470uF	22uF	Cap Pol1
8			1		C12	Polarized Capacitor (Radial)	47uF_50V	47uF	Cap Pol1
9			1		D1		*TO254P1066X482X2286-3	VT11080C	MBR20100CT
10			1		D2	Default Diode	DIOM4226X244N	1N4007	Diode
11			1		D3	Default Diode	DIOM4226X244N	SS34	Diode
12			1		DB1		bridge smd (mb6s)	MB6S	bridge smd (mb6s)
13			1		DZ1		Minimelf	28v	zener
14			1		L1	Line Filter	Line Filter	1mH	CM Choke
15			1		L2	Resistor	RES 1206 (3216X08L)	Short Circuit	Resistor
16			2		P1, P2	Header, 2-Pin	PCBComponent_1	Header 2	Header 2
17			2		R1, R6	Resistor	RES 1206 (3216X08L)	220	Resistor
18			3		R2, R4, R7	Resistor	RES 1206 (3216X08L)	1.5M	Resistor
19			2		R3, R5	Resistor	RES 1206 (3216X08L)	100K	Resistor
20			3		R8, R9, R10	Resistor	RES 1206 (3216X08L)	10	Resistor
21			1		R11	Resistor	RES 1206 (3216X08L)	1K	Resistor
22			1		R12	Resistor	RES 1206 (3216X08L)	47K	Resistor
23			1		R13	Resistor	RES 1206 (3216X08L)	47	Resistor
24			1		R14	Resistor	RES 1206 (3216X08L)	12K	Resistor
25			1		R15	Resistor	RES 1206 (3216X08L)	22K	Resistor
26			1		T1	Ferrite Core	PQ1620	Ferrite Core PQ1620	PQ1620
27			1		U1	4-Pin Phototransistor Optocoupler	Opto P521		Optoisolator1
28			1		U2	TNY278	TNY278	TNY278	TNY278
29			1		U3		*SOT95P237X112-3N	TL431CDBZT	TL431CDBZT
30			1		Var1	Resistor 0.5	Res50	Resistor vertical	Resistor vertical