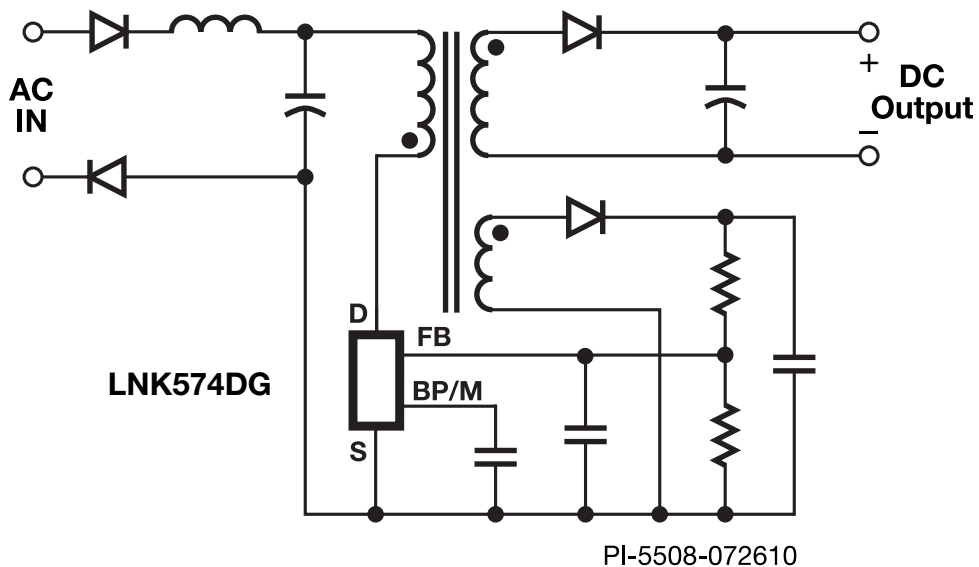


LinkZero™ -LP

- <5 mW no-load at 230 VAC
- Accurate IC parameter tolerances
- Improved system manufacturing yield
- Suitable for low-cost clampless designs
- Simple ON/OFF control, no loop compensation
- Constant efficiency to very light loads



Zero No-Load Consumption Integrated Off-Line Switcher



Applications

- Cell phones
- Adapters up to 5 W

Output Power

Part Number	230 VAC \pm 15%		85-265 VAC	
	Adapter (W)	Open Frame (W)	Adapter (W)	Open Frame (W)
LNK574DG	3	3	3	3
LNK576DG	6	9	5	8



SO-8C (D package)

Design Support

- Data Sheet** LinkZero-LP data sheet (www.power.com/linkzero-lp-data-sheet)
- Design Example** <5 mW no-load input power, 8 W standby power supply (DER-417) (www.power.com/der-417)
- Design Example** <5 mW no-load input power, 2.1 W CV/CC charger (DER-258) (www.power.com/der-258)