

# LED Driver with Direct Output Current Sensing

## ■ Description

- ▶ LED driver which directly senses the output current to regulate the output current
- ▶ Feedback provided to the controller is a current signal

## ■ Benefits

- ▶ Higher tolerance
- ▶ Reduced sensitivity to transistor parameters compared to conventional sense and feedback circuits
- ▶ **Could be used with:** LED drivers and controllers, such as LinkSwitch™-PH

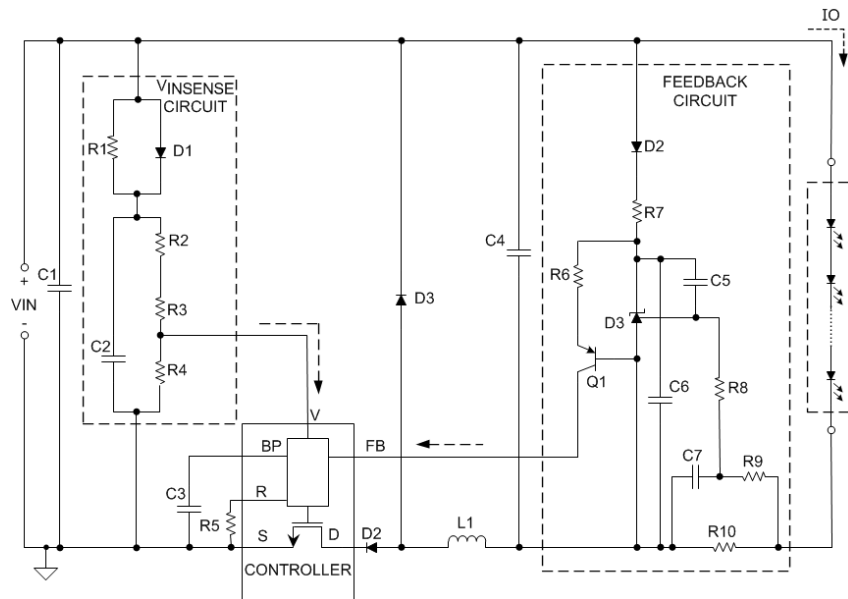


Figure 1. LED driver with an example feedback circuit for direct output current sensing