

2SMLT0220D2I0C SCALE-iFlex LT Family

Module Adapted Gate Driver (MAG) for Driving
Half-Bridge Power Modules with NTC Measurement
via Electrical Interface

PRELIMINARY

Product Highlights

Highly Integrated, Compact Footprint

- Ready-to-use gate driver solution for iXPLV power modules up to 3300 V blocking voltage
- Dual channel gate driver
- To be controlled by IMC 2SILT1200T2A0C-33
- 1.0 W output power per channel at maximum ambient temperature
- ± 20 A maximum gate current
- Operation altitude up to 2000 m
- Optimized for paralleling of up to 4 power modules
- - 40 °C to 85 °C operating ambient temperature

Protection / Safety Features

- Short circuit protection
- Overvoltage protection by Advanced Active Clamping (AAC)
- NTC temperature sensing
- Undervoltage lock-out (UVLO)
- Gate clamping to VISO rail.
- Applied double sided conformal coating

Full Safety and Regulatory Compliance

- Clearance and creepage distances between both secondary sides meet requirements for functional isolation according to IEC61800-5-1
- RoHS compliant

Applications

- Wind and photovoltaic power
- Industrial drives

Description

This datasheet describes the Module Adapted Gate Driver (MAG) of the SCALE-iFlex™ LT with NTC gate driver family. The 2SMLT0220D2I0C works conjointly with a central Isolated Master Control (IMC) 2SILT1200T2A0C-33 that supports up to four power modules of iXPLV packages, and a cable set.

The IMC 2SILT1200T2A0C-33 operates power modules with a rated blocking voltage of up to 3300 V. The MAGs are matched to the specific power modules from a variety of suppliers.

SCALE-iFlex LT with NTC enables easy paralleling of power modules providing high flexibility and system scalability.

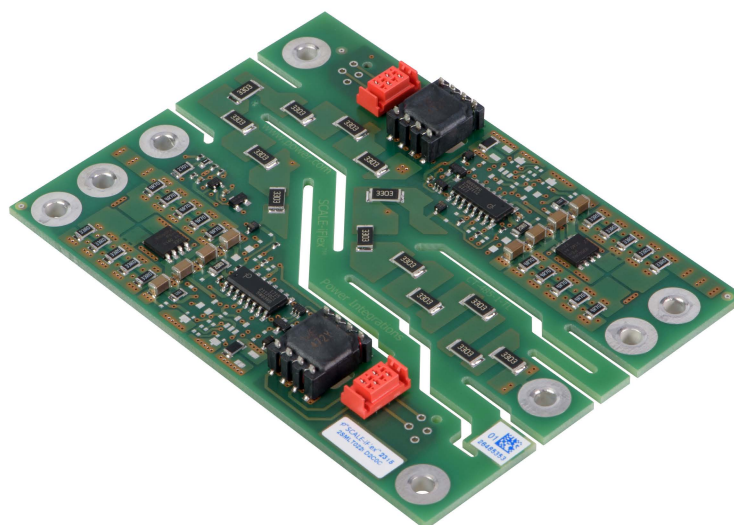


Figure 1. Board Photo of 2SMLT0220D2x0C.

Pin Functional Description

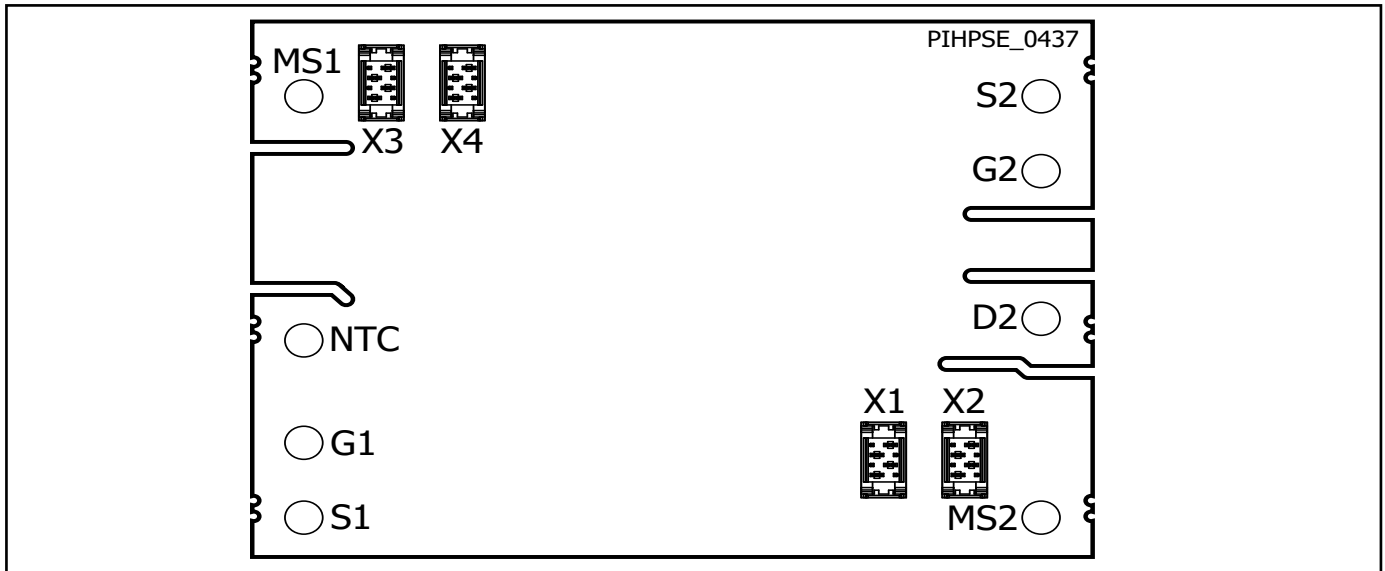


Figure 2. Pin Configuration of 2SMLT0220D2I0C.

Connections to Power Module

2SMLT0220D2x0 MAGs are directly mounted to power modules using screws.

S1

Auxiliary source contact of channel 1 switch.

G1

Gate contact of channel 1 switch.

S2

Auxiliary source contact of channel 2 switch.

G2

Gate contact of channel 2 switch.

Screw holes MS1, MS2

Screw holes for mechanical fixation of the board to the power module.

NTC

Contacts to module internal NTC.

D2

Auxiliary Drain contact of channel 2 switch.

Connector X1

TE CONNECTIVITY 338068-4 Micro-MaTch Header (or similar);
Connection from MAG to IMC or previous MAG for gate driver channel 1.

Connector X2

TE CONNECTIVITY 338068-4 Micro-MaTch Header (or similar);
Connection from MAG to next MAG (if any) for gate driver channel 1.

Connector X3

TE CONNECTIVITY 338068-4 Micro-MaTch Header (or similar);
Connection from MAG to IMC or previous MAG for gate driver channel 2.

Connector X4

TE CONNECTIVITY 338068-4 Micro-MaTch Header (or similar);
Connection from MAG to next MAG (if any) for gate driver channel 2.

Functional Description of 2SMLT0220D2I0C

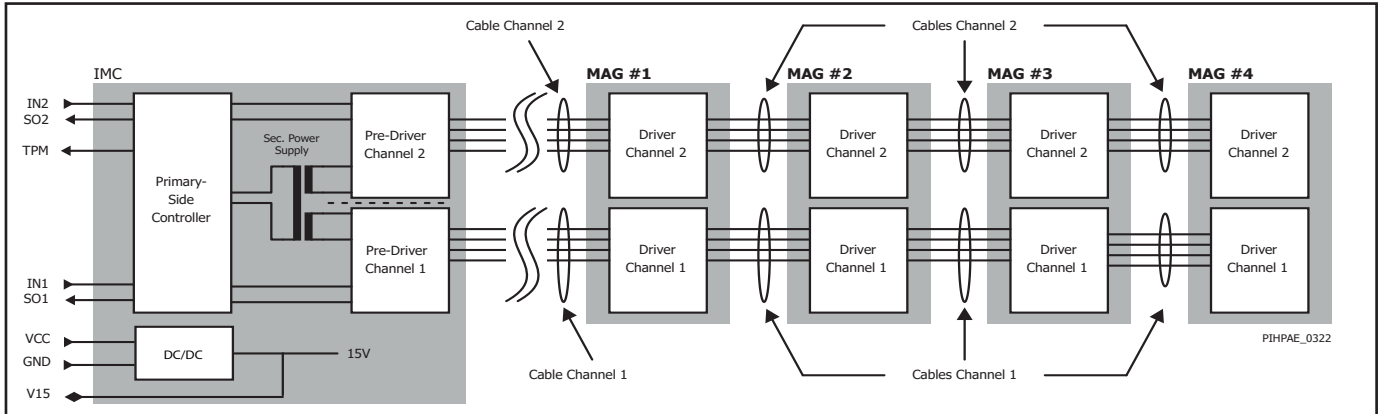


Figure 3. Functional Block Diagram of 2SILT1200T2A0C with 4 2SMLT0220D2I0C MAGs.

The 2SMLT0220D2I0C (MAGs) are dual channel plug-and-play gate drivers for iXPLV power modules. The MAGs are fully mechanically and electrically adapted to the IGBT modules. They work in conjunction with the IMC to drive up to 4 parallel connected power modules (one MAG per power module is necessary).

Cable Terminals (X1, X2, X3, X4)

All MAGs have two connector terminals per channel.

The first MAG needs to be connected to the secondary-side of the IMC. Channel 1 from the IMC needs to be connected to channel 1 of the MAG (X1 or X2). Accordingly, channel 2 of the IMC with channel 2 of the MAG (X3 or X4).

In case more than one MAG is used, the first MAG needs to be connected with the second MAG. Accordingly, the second MAG with the third MAG and so on. Note that X1 and X2 respectively X3 and X4 are fully identical and can be exchanged. However, connections to channel 1 and channel 2 shall not be mixed.

Screw Terminals

The MAG is mounted on top of the power module. It must be screwed to the power semiconductor module. For details please refer to the 'mounting instruction' section in this document.

Cables

SCALE-iFlex LT with NTC gate drivers require a set of cables to establish the electrical connection between the IMC and the first MAG as well as between paralleled MAGs. The usage of cables allows for flexible positioning of the IMC within the application. Furthermore, it allows adapting to various pitches between paralleled power modules. Cables recommendations are given in the data sheet of the IMC.

Power Supplies

The isolated voltages for the gate driver channels of the MAG is generated by the integrated DC/DC converter of the IMC. The positive rail of the gate driver channels has the voltage level V_{VISO} and the negative rail has the voltage level V_{COM} . Both are referenced to the source potential at terminal S1 or S2 of the driven power semiconductor.

Gate Voltage

SCALE-iFlex LT with NTC possesses a voltage regulator for the positive (turn-on) rail of the gate voltage. Internal current sources are regulating actively the positive gate-source voltage $V_{GS(ON)}$ independently of actual load conditions within the maximum specified ratings. Therefore, the on-state gate-emitter voltage of the power semiconductor equals in

steady-state the positive supply voltage V_{VISO} .

The off-state gate-source voltage $V_{GS(OFF)}$ equals in steady-state the voltage V_{COM} . This voltage is load dependent. It has its lowest value under no load conditions and is increasing slightly (i.e. getting less negative) with increasing load.

In the event of an under voltage lock-out condition the gate driver changes the control of the positive rail towards control of the negative rail V_{COM} to avoid any unpredictable system behavior.

Short-Circuit Protection

The SCALE-iFlex LT with NTC gate uses the semiconductor desaturation effect to detect short-circuits.

The desaturation is monitored on each MAG by using a resistor sensing network. The drain-source voltage is checked after the response time t_{RES} at turn-on to detect a short-circuit. If the voltage is higher than the programmed threshold voltage $V_{DS(SAT)}$, the driver detects a short-circuit condition. The monitored power semiconductor is switched off after a delay of $t_{PD(SOX)}$ and a fault signal is transmitted to the IMC. Paralleled MAGs detect desaturation conditions with minimum time delays and turn off the corresponding power semiconductor.

It should be noted that the response time t_{RES} is dependent on the DC-link voltage. It remains constant between about 50% to 100% of the maximum DC-link voltage and increases at lower DC-link voltage. Please refer to the relevant data sheet section.

Note: The desaturation function is for short-circuit detection only and cannot provide over-current protection. However, over-current detection has a lower time priority and can be easily provided by the application.

Gate Clamping

In the event of a short-circuit condition, the gate voltage is increased due to the high dv_{DS}/dt between the drain and source terminals of the driven power semiconductor. This dv_{DS}/dt drives a current through the Miller-capacitance (capacitance between the gate and drain) and charges the gate capacitance, which eventually leads to a gate-source voltage larger than the nominal gate-source turn-on voltage. In consequence, the short-circuit current is increased due to the transconductance of the power semiconductor.

Advanced Active Clamping (AAC)

Active clamping is a technique designed to partially turn on the power semiconductor in case the drain-source voltage exceeds a predefined threshold. The power semiconductor is then kept in linear operation. Figure 4 illustrates the general behavior of active clamping and its voltage thresholds. Basic active clamping topologies implement a single feedback path from the power semiconductor collector/drain through transient voltage suppressor (TVS) diodes to the power semiconductor gate. The gate driver contains Power Integrations' Advanced Active Clamping (AAC) based on this principle: When active clamping is activated, the turn-off MOSFET of the gate driver is switched off in order to improve the effectiveness of the active clamping and to reduce the losses in the TVS diodes. This feature is mainly integrated in the secondary-side ASIC of the gate driver.

To ensure that the gate-source voltage stays close to the nominal turn-on voltage each MAG features a gate-clamping circuitry. The gate clamping provides a voltage similar to V_{VISO} to the gate, i.e. 15 V. As the effective short-circuit current is a function of the gate-source voltage the short-circuit current is limited. As consequence, the energy dissipated in the power semiconductor during the short-circuit event is reduced, leading to a junction temperature within the short-circuit safe operating area (SCSOA) limits and enables a safe turn-off of the device.

It should be noted that AAC should not be activated during regular operation to avoid excessive heating of the transient voltage suppressor diodes.

Conformal Coating

The electronic components of the gate driver are protected by a layer of acrylic conformal coating with a typical thickness of 50µm using ELPEGUARD SL 1307 FLZ/2 from Lackwerke Peters on both sides of the PCB. This coating layer increases the product reliability when exposed to contaminated environments.

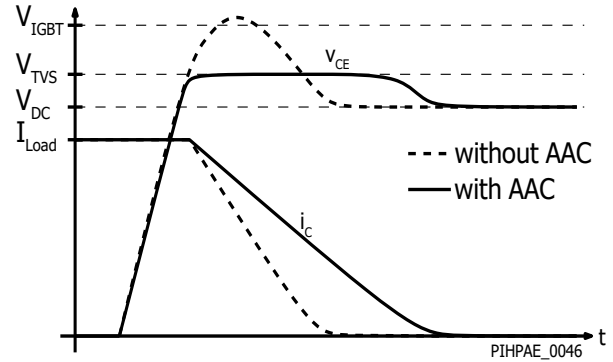


Figure 4. Advanced Active Clamping

Absolute Maximum Ratings

Parameter	Symbol	Conditions $T_A = -40\text{ °C to }85\text{ °C}$	Min	Max	Units
Absolute Maximum Ratings¹					
Gate Output Power Per channel²	P_{GX}			1	W
Switching Frequency³	f_{SW}			25	kHz
Operating Voltage Secondary-Side	$V_{DC(LINK)}$	Transient only (for 3.3 kV versions)		3300	V
		Transient only (for 2.3 kV versions)		2300	V
		Transient only (for 1.7 kV versions)		1700	V
		Limited to 60 s (for 3.3 kV versions)		2500	V
		Limited to 60 s (for 2.3 kV versions)		1800	V
		Limited to 60 s (for 1.7 kV versions)		1250	V
		Permanently applied (3.3 kV driver versions)		2200	V
		Permanently applied (2.3 kV driver versions)		1600	V
		Permanently applied (1.7 kV driver versions)		1250	V
Common-Mode Transient Peak Voltage	$V_{\Delta E}$	Between parallel connected sources		50	V_{peak}
Common-Mode Time-Voltage-Area	$\int dv \cdot dt$	Between parallel connected sources		20	μVs
Storage Temperature⁴	T_{ST}		-40	50	°C
Operating Ambient Temperature	T_A		-40	85	°C
Surface Temperature⁵	T			125	°C
Relative Humidity	H_R	No condensation		93	%
Altitude of Operation⁶	A_{OP}			2000	m

NOTES:

- Stresses beyond those listed under absolute maximum ratings may cause permanent damage to the device.
- Actually achievable maximum power depends on several parameters and may be lower than the given value. It has to be validated in the final system. It is mainly limited by the maximum allowed surface temperature.
- This limit applies to the whole product family. The actual achievable switching frequency may be lower for specific gate driver variants and has to be validated in final system as it is additionally limited by maximum gate output power in conjunction with the maximum allowed surface temperature.
- The storage temperature inside the original package or in case the coating material of coated products may touch external parts must be limited to the given value. Otherwise, it is limited to 85°C.
- The component surface temperature, which may strongly vary depending on the actual operating conditions, must be limited to the given value to ensure long-term reliability of the product.
- Operation above this level requires a voltage derating to ensure proper isolation coordination.

Characteristics

Parameter	Symbol	Conditions $V_{VCC} = 24\text{ V}$ (2SILT1200T2A0C-33), $T_A = 25\text{ }^{\circ}\text{C}$		Min	Typ	Max	Units
Power Supply							
Power Supply Monitoring Threshold (Secondary-Side)	UVLO _{VISO}	Referenced to respective terminal S1 or S2	Clear fault (resume operation)	11.6	12.6	13.6	V
			Set fault (suspend operation)	11.0	12.0	13.0	
			Hysteresis	0.35			
	UVLO _{COM}		Clear fault (resume operation)		-5.15		V
			Set fault (suspend operation)		-4.85		
			Hysteresis		0.3		
Gate Output							
Gate Turn-On Voltage	$V_{GS(ON)}$	$P_x = 0.2\text{ W (IMC)}$, referenced to terminal S1 or S2			19.5		V
		$P_x = 5.6\text{ W (IMC)}$, referenced to terminal S1 or S2			18.8		
Gate Turn-Off Voltage	$V_{GS(OFF)}$	$P_x = 0.2\text{ W (IMC)}$, referenced to terminal S1 or S2			-6		V
		$P_x = 5.6\text{ W (IMC)}$, referenced to terminal S1 or S2			-6		

Characteristics

Parameter	Symbol	Conditions V _{VCC} = 24 V (2SILT1200T2A0C-33), T _A = 25 °C		Min	Typ	Max	Units
Short Circuit Protection							
Static V _{DS} -Monitoring Threshold	V _{DS(STAT)}	With 3.3 kV driver versions			TBD		V
Response Time (10% V _{GS} to 90% V _{GS})	t _{RES}	10% to 90% of V _{GS} (with 3.3 kV)	DC-link voltage= 2200 V		TBD		μs
		10% to 90% of V _{GS} (with 3.3 kV)	DC-link voltage= 1000 V		TBD		μs
Delay to Turn-Off Power Semiconductor After Short-Circuit Detection	t _{PD(SOx)}				0.1		μs

Characteristics (cont.)

Parameter	Symbol	Conditions $T_A = 25\text{ °C}$	Min	Typ	Max	Units
Electrical Isolation						
Creepage Distance	CPG_{S-S}	Secondary-side to secondary-side	22			mm
Clearance Distance	CLR_{S-S}	Secondary-side to secondary-side	8.7			mm
Mounting						
Terminal Connection Torque⁷	M_{MAG}	Screw M3				Nm
Screw header/washer diameter	d_{M3}	Terminals G1, S1, D2, G2, S2, NTC			8	mm
		Terminals MS1, MS2			8	mm
Bending	I_{BEND}	According to IPC			0.75	%

Mounting Instruction

The MAG is mounted on top of the target power module. 2SMLT0220D2I0C must be screwed to the power semiconductor module with metal screws. The mounting force is given with M_{MAG} . M_{MAG} must not exceed the values given in the respective data sheet of the target power module. Hence, the actual mounting torque may be smaller than M_{MAG} .

It is recommended to follow mounting instructions from the corresponding power semiconductor manufacturer.

Parallel connected modules shall have the same distances between each other to ensure a symmetrical switching behaviour.

To ensure proper cooling by natural or forced convection minimum clearance of 50 mm of the MAG top side is required. This includes also that the AC and/or DC bus bars are not covering parts or the entire MAG top side.

Minimum distances between paralleled modules shall be considered according to the converter system isolation coordination. Otherwise insulation foils shall be used to isolated adjacent MAGs from each other.

NOTES:

7. Refer to data sheet of the IGBT module.

Product Dimensions of 2SMLT0220D2I0C

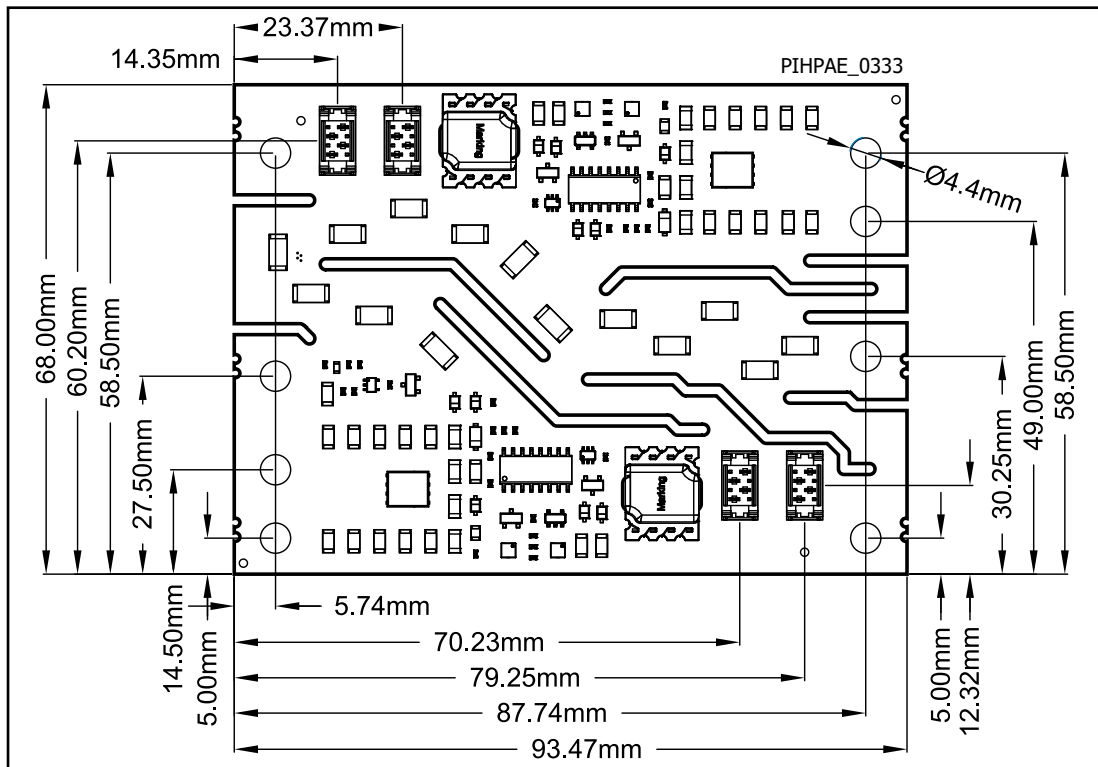


Figure 5. Top View of 2SMLT0220D2I0C.

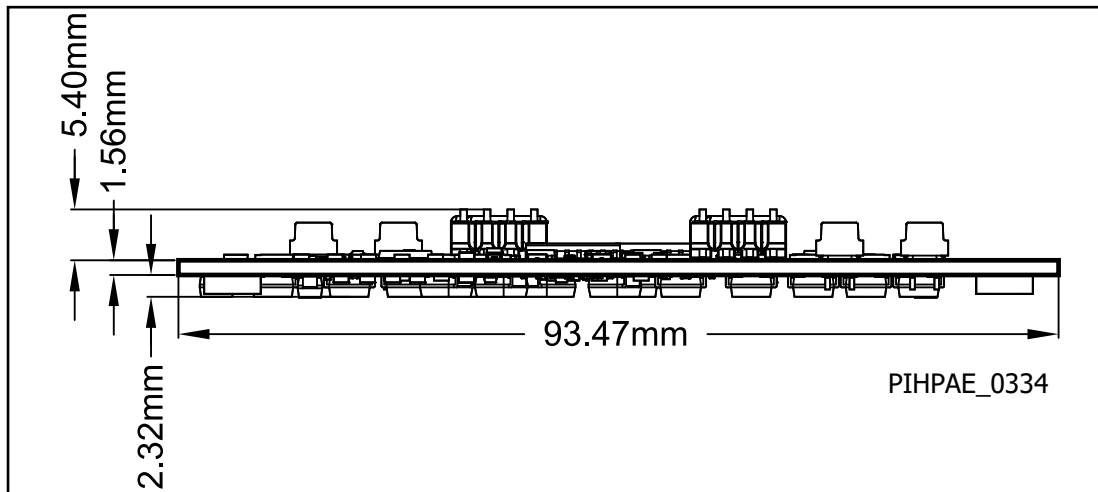


Figure 6. Side View of 2SMLT0220D2I0C.

Transportation and Storage Conditions

For transportation and storage conditions refer to Power Integrations' Application Note AN-1501.

RoHS Statement

We hereby confirm that the product supplied does not contain any of the restricted substances according to Article 4 of the RoHS Directive 2011/65/EU in excess of the maximum concentration values tolerated by weight in any of their homogeneous materials.

Additionally, the product complies with RoHS Directive 2015/863/EU (known as RoHS 3) from 31 March 2015, which amends Annex II of Directive 2011/65/EU.

Product details

Part Number	Power Module	Voltage Class	Current Class	Package	IGBT Supplier	$R_{G(on)}$	$R_{G(off)}$
2SMLT0220D2I0C-MG800FXF2YMS3	MG800FXF2YMS3	3300V	800A	iXPLV	Toshiba	TBD	TBD

Revision	Notes	Date
A	Preliminary Datasheet.	04/25

For the latest updates, visit our website: www.power.com

Power Integrations reserves the right to make changes to its products at any time to improve reliability or manufacturability. Power Integrations does not assume any liability arising from the use of any device or circuit described herein. POWER INTEGRATIONS MAKES NO WARRANTY HEREIN AND SPECIFICALLY DISCLAIMS ALL WARRANTIES INCLUDING, WITHOUT LIMITATION, THE IMPLIED WARRANTIES OF MERCHANTABILITY, FITNESS FOR A PARTICULAR PURPOSE, AND NON-INFRINGEMENT OF THIRD PARTY RIGHTS.

Patent Information

The products and applications illustrated herein (including transformer construction and circuits external to the products) may be covered by one or more U.S. and foreign patents, or potentially by pending U.S. and foreign patent applications assigned to Power Integrations. A complete list of Power Integrations patents may be found at www.power.com. Power Integrations grants its customers a license under certain patent rights as set forth at www.power.com/ip.htm.

Life Support Policy

POWER INTEGRATIONS PRODUCTS ARE NOT AUTHORIZED FOR USE AS CRITICAL COMPONENTS IN LIFE SUPPORT DEVICES OR SYSTEMS WITHOUT THE EXPRESS WRITTEN APPROVAL OF THE PRESIDENT OF POWER INTEGRATIONS. As used herein:

1. A Life support device or system is one which, (i) is intended for surgical implant into the body, or (ii) supports or sustains life, and (iii) whose failure to perform, when properly used in accordance with instructions for use, can be reasonably expected to result in significant injury or death to the user.
2. A critical component is any component of a life support device or system whose failure to perform can be reasonably expected to cause the failure of the life support device or system, or to affect its safety or effectiveness.

Power Integrations, the Power Integrations logo, CAPZero, ChiPhy, CHY, DPA-Switch, EcoSmart, E-Shield, eSIP, eSOP, HiperLCS, HiperPLC, HiperPFS, HiperTFS, InnoSwitch, Innovation in Power Conversion, InSOP, LinkSwitch, LinkZero, LYTSwitch, SENZero, TinySwitch, TOPSwitch, PI, PI Expert, PowiGaN, SCALE, SCALE-1, SCALE-2, SCALE-3 and SCALE-iDriver, are trademarks of Power Integrations, Inc. Other trademarks are property of their respective companies. ©2025, Power Integrations, Inc.

Power Integrations Sales Offices

WORLD HEADQUARTERS

5245 Hellyer Avenue
San Jose, CA 95138, USA
Tel: +1-408-414-9200
Fax: +1-408-414-9765
Email: usasales@power.com

INDIA (Bangalore)

NITON, No.11, Block C
1st Floor, Palace Road
Vasanthanagar
Bangalore 560001 India
Tel 1: +91-80-4113-8020
Tel 2: +91-80-4113-8028
Email: indiasales@power.com

INDIA (New Dehli)

#45, Top Floor
Okhla Industrial Area, Phase - III
New Dehli 110020, India
Tel: +91-11-4055-2351/53
Email: indiasales@power.com

INDIA (Mumbai)

Unit: 106-107, Sagar Tech Plaza-B
Sakinaka, Andheri Kurla Road
Mumbai, Maharashtra 400072, India
Tel 1: +91-22-4003-3700
Tel 2: +91-22-4003-3600
Email: indiasales@power.com

TAIWAN

5F, No. 318, Nei Hu Rd., Sec. 1
Nei Hu Dist., Taipei 114
Taiwan
Tel: +886-2-2659-4570
Fax: +886-2-2659-4550
Email: taiwansales@power.com

AMERICAS EAST

14492 Sheldon Rd.
Suite 300, Plymouth,
MI 48170, USA
Tel: +1-408-414-8835
Email: usasales@power.com

JAPAN

Yusen Shin-Yokohama 1-chome Bldg.
1-7-9, Shin-Yokohama, Kohoku-ku,
Yokohama-shi, Kanagawa 222-0033,
Japan
Tel: +81-45-471-1021
Fax: +81-45-471-3717
Email: japansales@power.com

ITALY

Via Milanese 20,
20099 Sesto San Giovanni (MI),
Italy
Tel: +39-02-4550-8708
Email: eurosales@power.com

KOREA

RM602, 6FL, 22
Teheran-ro 87-gil, Gangnam-gu
Seoul 06164, Korea
Tel: +82-2-2016-6610
Fax: +82-2-2016-6630
Email: koreasales@power.com

AMERICAS WEST

5245 Hellyer Avenue
San Jose, CA 95138, USA
Tel: +1-408-414-8835
Email: usasales@power.com

CHINA (Shanghai)

Unit 02-03, 6F, North Tower of T2
Guoco Changfeng City, No. 2, Lane
556, Daduhe Road, Putuo District,
Shanghai 200062, China
Tel: +86-21-6354-6323
Fax: +86-21-6354-6325
Email: chinasales@power.com

GERMANY (AC-DC/LED Sales)

Einsteinring 37, 85609 Dornach/
Aschheim, Germany
Tel: +49-89-5527-39100
Fax: +49-89-1228-5374
Email: eurosales@power.com

GERMANY (Gate Driver Sales)

HellwegForum 3,
59469 Ense, Germany
Tel: +49-2938-64-39990
Email: gate-drivers.sales@power.com

CANADA

6600 TransCanada Hwy
Suite 610, Pointe Claire,
Quebec H9R 4S2
Canada
Tel: +1-408-414-8835

SINGAPORE

51 Newton Road
#20-01/03 Goldhill Plaza
Singapore, 308900
Tel: +65-6358-2160
Cust. Svc: +65-6356-4480
Fax: +65-6358-2015
Email: singaporesales@power.com

UNITED KINGDOM

Radio House, St Andrews Road
Chesterton, Cambridge CB4 1DL,
United Kingdom
Tel: +44-7823-557-484
Email: eurosales@power.com

CHINA (Shenzhen)

17/F, Hivac Building, No 2
Keji South 8th Road, Nanshan
District
Shenzhen 518057, China
Tel: +86-755-8672-8689
Fax: +86-755-8672-8690
Email: chinasales@power.com