

Design Example Report

Title	<i>No Electrolytic Capacitor, High Efficiency ($\geq 90\%$), High Power Factor (> 0.9) 15 W LED Driver Using LinkSwitch™-PH LNK417EG</i>
Specification	90 VAC – 265 VAC Input; 30 V, 500 mA Output
Application	LED Driver
Author	Applications Engineering Department
Document Number	DER-284
Date	July 14, 2015
Revision	1.3

Summary and Features

- No electrolytic capacitors
- Clean monotonic start-up – no output blinking
- Fast start-up (<100 ms) – no perceptible delay
- Highly energy efficient
 - $\geq 90\%$ at 115 VAC and 230 VAC input
- Low cost, low component count and small printed circuit board footprint solution
 - No current sensing required
 - Frequency jitter for smaller, lower cost EMI filter components
- Integrated protection and reliability features
 - Output open-circuit / output short-circuit protected with auto-recovery
 - Line input overvoltage shutdown extends voltage withstand during line faults.
 - Auto-recovering thermal shutdown with large hysteresis protects both components and printed circuit board
 - No damage during brown-out or brown-in conditions
- Meets IEC 61000-4-5 ring wave, IEC 61000-3-2 Class C harmonics and EN55015 B conducted EMI

Power Integrations

5245 Hellyer Avenue, San Jose, CA 95138 USA.
Tel: +1 408 414 9200 Fax: +1 408 414 9201
www.power.com

PATENT INFORMATION

The products and applications illustrated herein (including transformer construction and circuits external to the products) may be covered by one or more U.S. and foreign patents, or potentially by pending U.S. and foreign patent applications assigned to Power Integrations. A complete list of Power Integrations' patents may be found at www.powerint.com. Power Integrations grants its customers a license under certain patent rights as set forth at <http://www.powerint.com/ip.htm>.



Table of Contents

1	Introduction.....	5
2	Populated Circuit Board	6
3	Power Supply Specification	7
4	Schematic.....	8
5	PCB Layout.....	9
6	Circuit Description.....	11
6.1	Input Filtering	11
6.2	LinkSwitch-PH Primary	11
6.3	Bias Supply and Output Overvoltage Sensing	11
6.4	Output Feedback	12
6.5	Output Rectification and Filtering.....	12
6.6	Considerations for Higher Efficiency.....	12
7	Bill of Materials	13
8	Transformer Specification	14
8.1	Electrical Diagram.....	14
8.2	Electrical Specifications	14
8.3	Materials	14
8.4	Transformer Build Diagram	15
8.5	Transformer Construction.....	15
9	Transformer Design Spreadsheet	16
10	Performance Data	19
10.1	Efficiency vs. Line and Output (LED String) Voltage	19
10.1.1	27 V.....	19
10.1.2	30 V.....	19
10.1.3	33 V.....	19
10.2	Efficiency	20
10.3	Regulation.....	21
10.3.1	Line Regulation.....	21
11	Thermal Performance.....	23
11.1	$V_{IN} = 115 \text{ VAC}$	23
11.2	$V_{IN} = 230 \text{ VAC}$	23
12	Harmonic Current, PF and THD Data	24
12.1	Harmonic Current	24
12.2	PF and THD Data.....	25
13	Waveforms.....	26
13.1	Input Line Voltage and Current.....	26
13.2	Drain Voltage and Current.....	26
13.3	Output Voltage and Ripple Current	27
13.4	Output Rectifier Voltage and Current	28
13.5	Output Voltage and Current Start-up Profile	28
13.6	Output Current and Drain Voltage with Shorted Output.....	29
13.7	Output Current and Output Voltage with Shorted Output	29

13.8	Open Load Output Voltage	30
14	Line Surge	31
15	Conducted EMI	32
16	Revision History	36

Important Note: Although this board is designed to satisfy safety isolation requirements, the engineering prototype has not been agency approved. Therefore, all testing should be performed using an isolation transformer to provide the AC input to the prototype board.



1 Introduction

This document describes an isolated, power factor corrected, very high efficiency LED driver designed to drive a 30 V LED string at a current of 500 mA (nominal). The input voltage range is 90 VAC to 265 VAC.

The LED driver uses a LNK417EG device from the LinkSwitch-PH family of ICs. This integrated controller and 725 V MOSFET dramatically reduces the complexity and component count of the solution.

The key design goals were to achieve the highest possible efficiency and eliminate electrolytic capacitors. Both are key factors for increasing the lifetime and reliability of LED drivers making this solution ideal for industrial and commercial applications.

This document contains the LED driver specification, schematic, bill of material, transformer documentation and typical performance characteristics.

2 Populated Circuit Board

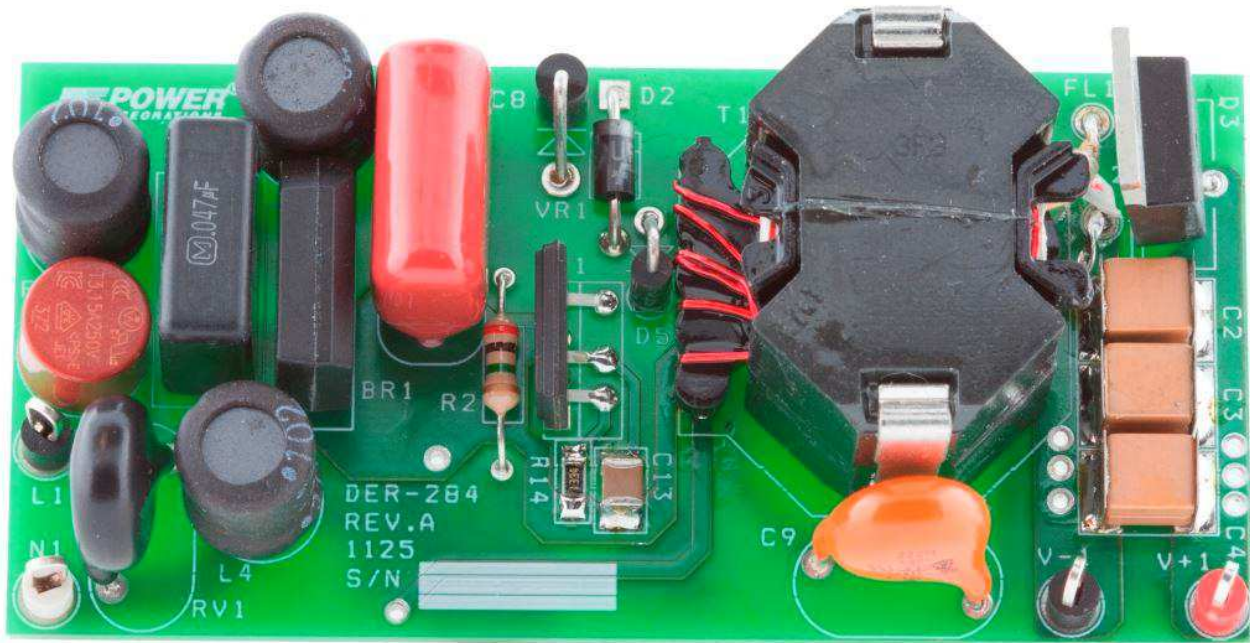


Figure 1 – Populated Circuit Board Photograph (Top View). 3.115" L x 1.525" W.

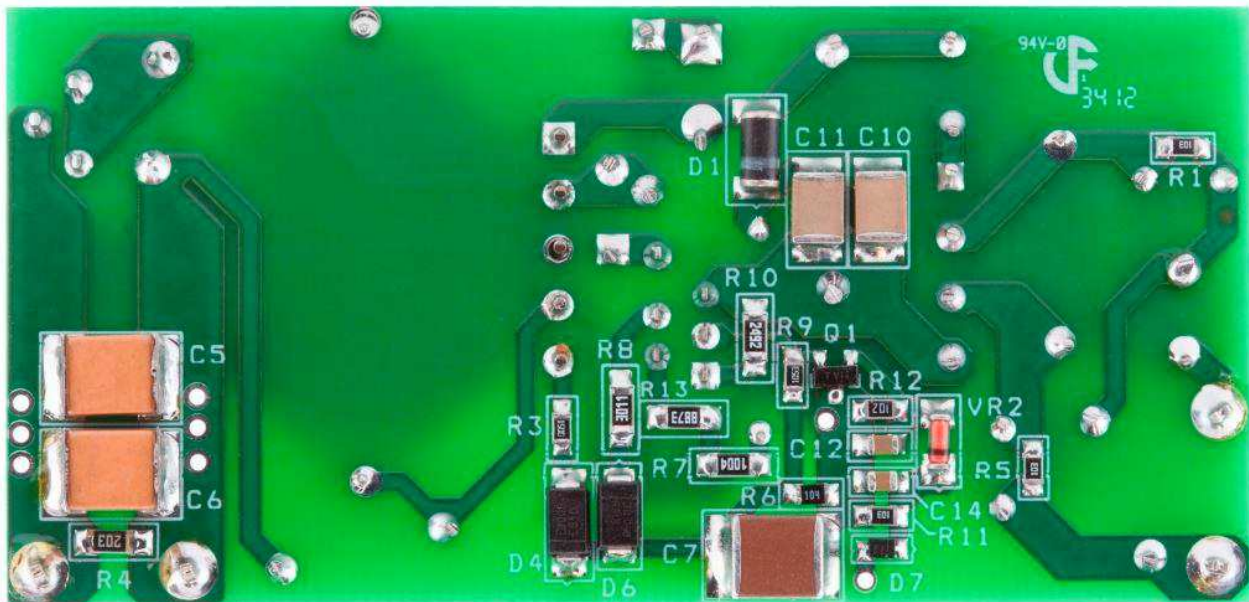


Figure 2 – Populated Circuit Board Photograph (Bottom View).

3 Power Supply Specification

The table below represents the minimum acceptable performance of the design. Actual performance is listed in the results section.

Description	Symbol	Min	Typ	Max	Units	Comment
Input						
Voltage	V_{IN}	90	115	265	VAC	2 Wire – no P.E.
Frequency	f_{LINE}	47	50/60	64	Hz	
Output						
Output Voltage	V_{OUT}	27	30	33	V	
Output Current	I_{OUT}		0.50		A	
Total Output Power						
Continuous Output Power	P_{OUT}		15		W	
Efficiency						
Full Load	$\eta_{(115)}$ $\eta_{(230)}$	90 91				Measured at P_{OUT} , 25 °C, 115 VAC Measured at P_{OUT} , 25 °C, 230 VAC
Environmental						
Conducted EMI						IEC 61000-4-5, 200 A
Safety						
Ring Wave (100 kHz) Differential Mode (L1-L2) Common mode (L1/L2-PE)			2.5		kV	
Power Factor		0.9				Measured at $V_{OUT(TYP)}$, $I_{OUT(TYP)}$ and 115/230 VAC
Harmonics						Class C Limits at $P_{IN} \leq 25$ W are Equal to Class D Limits.
Ambient Temperature ^a	T_{AMB}		40		°C	Free convection, sea level

Notes:

^a Maximum ambient temperature specification may be increased by adding a small heat sink to the LinkSwitch-PH device.

4 Schematic

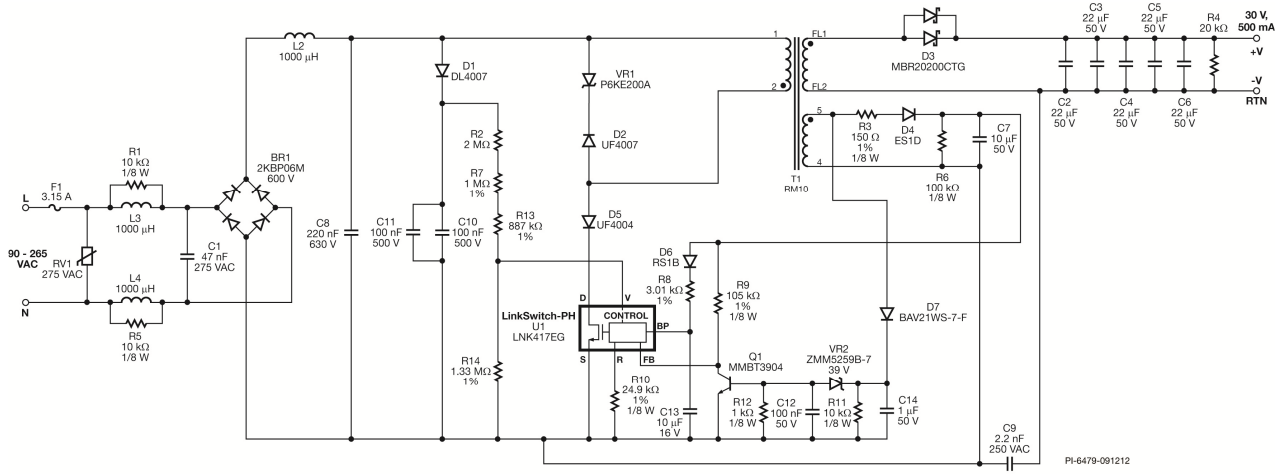


Figure 3 – Schematic.

5 PCB Layout

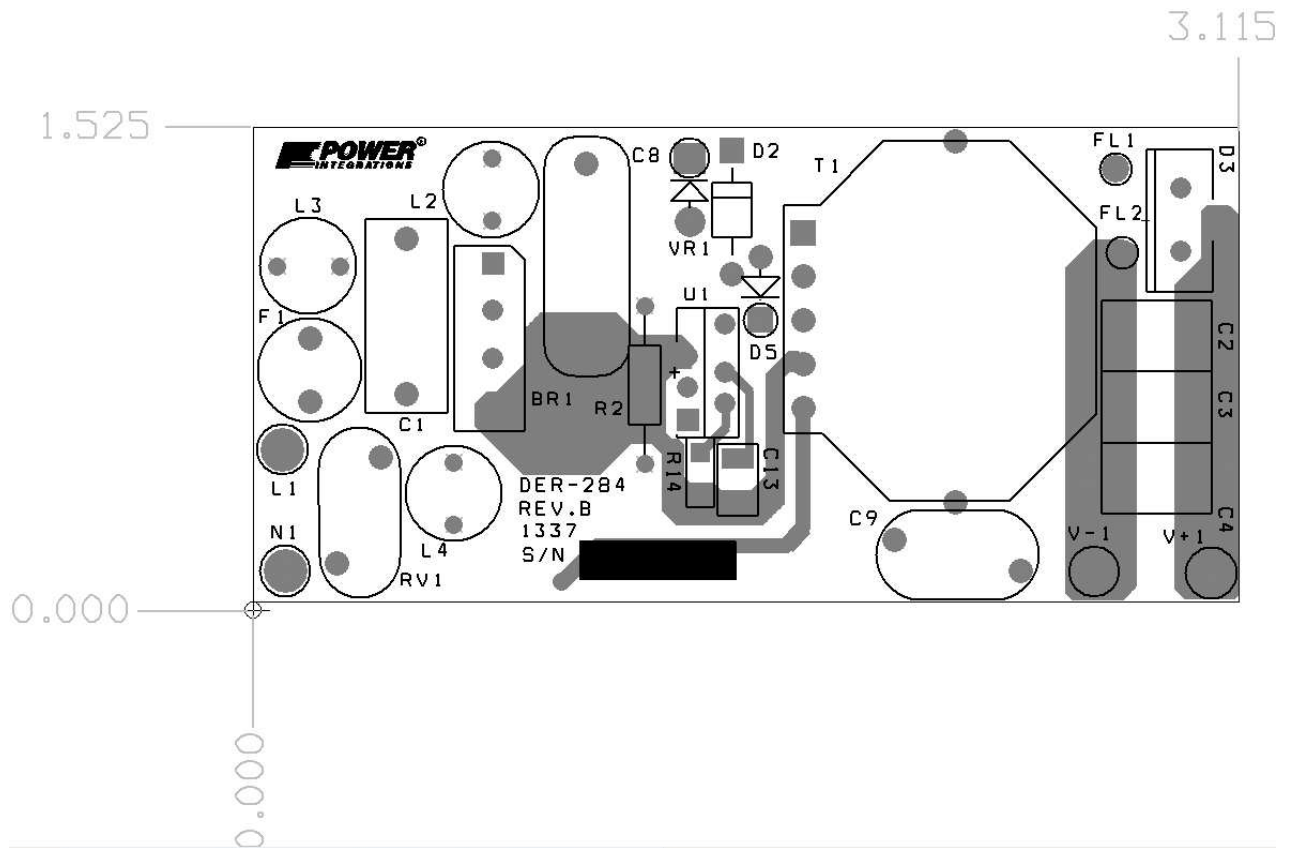


Figure 4 – Layout, Top Side.



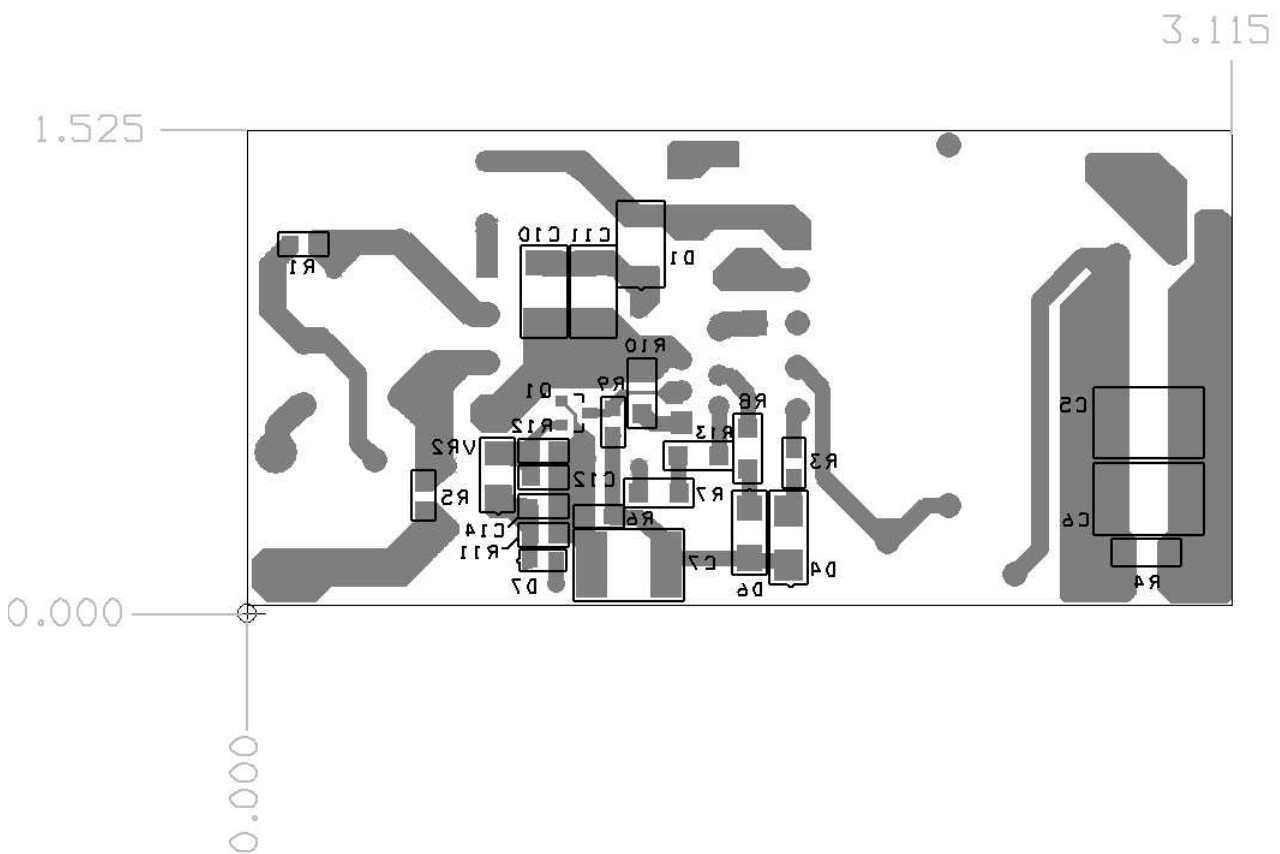


Figure 5 – Layout, Bottom Side.

6 Circuit Description

The LinkSwitch-PH device is a controller and integrated 725 V MOSFET intended for use in LED driver applications. The LinkSwitch-PH is configured for use in a single-stage continuous conduction mode flyback topology and provides a primary side regulated constant current output while maintaining high power factor from the AC input.

6.1 Input Filtering

Fuse F1 protects the input and BR1 rectifies the AC line voltage. Inductor L2-L4, C1, R1, and R5 form the EMI filter and together with C9 (Y1 safety) capacitor allow the design to meet EN55015B conducted EMI limits. Capacitor C8 provides a low impedance path for the primary switching current. A small capacitor value is necessary to maintain a power factor of greater than 0.9.

6.2 LinkSwitch-PH Primary

Diode D1 and high-voltage SMD ceramic capacitors C11 and C10 detect the peak AC line voltage. This voltage is converted to a current into the VOLTAGE MONITOR (V) pin via R2, R7 and R13. This current is also used by the device to set the input over/undervoltage protection thresholds. The V pin current and the FEEDBACK (FB) pin current are used internally to control the average output LED current. Non-dimming designs require 24.9 k Ω resistor on the REFERENCE (R) pin (R10) and 3.9 M Ω on the V pin (R2+R7+R13). Resistor R10 also selects the line undervoltage threshold. Resistor R14 was added to further improve line regulation, providing a constant output current over the specified input voltage range.

Diode D2 and VR1 clamp the drain voltage to below the BV_{DSS} rating (725 V) of the internal power MOSFET in U1. Diode D5 is necessary to prevent reverse current from flowing through the LinkSwitch-PH device (the result of the minimal input capacitance).

6.3 Bias Supply and Output Overvoltage Sensing

Diode D4, D6, C7, R3, R6 and R8 form the primary bias supply. This supplies the IC operating current into the BYPASS (BP) pin through D6 and R8 during normal operation. Resistor R3 provides filtering to improve output regulation while R6 acts as a minimum load.

Capacitor C13 provides decoupling for the LinkSwitch-PH. During start-up C13 is charged to ~ 6 V from an internal high-voltage current source tied to the device DRAIN (D) pin. Once charged the energy stored in C13 is used to run the device until the output and bias winding voltage rise and current is supplied via R8.

A disconnected load / overvoltage shutdown function is provided by D7, C14, R11, VR2, C12, R12 and Q1. A separate bias winding output voltage is used to eliminate the delay introduced by the large value of C7 (compared to C14). Should the output LED load be

disconnected, the output voltage (and therefore the bias winding voltage across C14) will rise. Once this exceeds the voltage rating of VR2 plus the V_{BE} of Q1 then Q1 is biased on which pulls the FB pin down. Once the current into the FB pin of U1 falls below $I_{FB(AR)}$ the device enters auto-restart, limiting the output voltage. Resistor R11, C12 provide filtering and R12 defines the Zener current at the point Q1 turns on.

6.4 Output Feedback

A current proportional to the output voltage from the primary bias winding is fed into the FB pin through R9. This information together with the line input voltage and the drain current are used to maintain a constant output current.

6.5 Output Rectification and Filtering

Diode D3 rectifies the secondary winding while ceramic capacitors C2, C3, C4, C5 and C6 filter the output. A 20 A, 200 V Schottky diode was selected for high efficiency. Resistor R4 provides a minimum load to ensure the LED light output falls to zero when the AC is removed.

6.6 Considerations for Higher Efficiency

The following changes were made over the standard RD-195 to achieve higher efficiency.

- Larger LinkSwitch-PH device (LNK417EG vs. LNK416EG).
- 20 A vs. 4 A Schottky output diode
- Larger RM10 core size vs. RM8 to allow lower winding current density (and lower winding losses).

7 Bill of Materials

Item	Qty	Ref Des	Description	Mfg Part Number	Mfg
1	1	BR1	600 V, 2 A, Bridge Rectifier, Glass Passivated	2KBP06M-E4/51	Vishay
2	1	C1	47 nF, 275 VAC, Film, X2	ECQU2A473ML	Panasonic
3	5	C2 C3 C4 C5 C6	22 μ F, 50 V, Ceramic, X7R	KTJ500B226M55BFT00	United Chemi-con
4	1	C7	10 μ F, 50 V, Ceramic, X7R, 2220	C5750X7R1H106M	TDK
5	1	C8	220 nF, 630 V, Film	ECQ-E6224KF	Panasonic
6	1	C9	2.2 nF, Ceramic, Y1	440LD22-R	Vishay
7	2	C10 C11	100 nF, 500 V, Ceramic, X7R, 1812	VJ1812Y104KXEAT	Vishay
8	1	C12	100 nF, 50 V, Ceramic, X7R, 0805	ECJ-2YB1H104K	Panasonic
9	1	C13	10 μ F, 16 V, Ceramic, X5R, 1210	C1210C106K4PACTU	Kemet
10	1	C14	1 μ F, 50 V, Ceramic, X7R, 0805	08055D105KAT2A	AVX
11	1	D1	1000 V, 1 A, Rectifier, Glass Passivated, DO-213AA (MELF)	DL4007-13-F	Diodes, Inc.
12	1	D2	1000 V, 1 A, Ultrafast Recovery, 75 ns, DO-41	UF4007-E3	Vishay
13	1	D3	200 V, 10 A, Dual Schottky, TO-220AB	MBR20200CTG	On Semi
14	1	D4	200 V, 1 A, Ultrafast Recovery, 25 ns, DO-214AC	ES1D	Vishay
15	1	D5	400 V, 1 A, Ultrafast Recovery, 50 ns, DO-41	UF4004-E3	Vishay
16	1	D6	100 V, 1 A, Fast Recovery, 150 ns, SMA	RS1B-13-F	Diodes, Inc.
17	1	D7	250 V, 0.2 A, Fast Switching, 50 ns, SOD-323	BAV21WS-7-F	Diodes, Inc.
18	1	F1	3.15 A, 250 V, Slow, TR5	37213150411	Wickman
19	3	L2 L3 L4	1000 μ H, 0.3 A	RLB0914-102KL	Bourns
20	1	Q1	NPN, Small Signal BJT, 40 V, 0.2 A, SOT-23	MMBT3904LT1G	On Semi
21	3	R1 R5 R11	10 k Ω , 5%, 1/8 W, Thick Film, 0805	ERJ-6GEYJ103V	Panasonic
22	1	R2	2.0 M Ω , 5%, 1/4 W, Carbon Film	CFR-25JB-2M0	Yageo
23	1	R3	150 Ω , 1%, 1/8 W, Thick Film, 0805	ERJ-6ENF1500V	Panasonic
24	1	R4	20 k Ω , 5%, 1/4 W, Thick Film, 1206	ERJ-8GEYJ203V	Panasonic
25	1	R6	100 k Ω , 5%, 1/8 W, Thick Film, 0805	ERJ-6GEYJ104V	Panasonic
26	1	R7	1.00 M Ω , 1%, 1/4 W, Thick Film, 1206	ERJ-8ENF1004V	Panasonic
27	1	R8	3.01 k Ω , 1%, 1/4 W, Thick Film, 1206	ERJ-8ENF3011V	Panasonic
28	1	R9	105 k Ω , 1%, 1/8 W, Thick Film, 0805	ERJ-6ENF1053V	Panasonic
29	1	R10	24.9 k Ω , 1%, 1/8 W, Thick Film, 0805	ERJ-6ENF2492V	Panasonic
30	1	R12	1 k Ω , 5%, 1/8 W, Thick Film, 0805	ERJ-6GEYJ102V	Panasonic
31	1	R13	887 k Ω , 1%, 1/4 W, Thick Film, 1206	ERJ-8ENF8873V	Panasonic
32	1	R14	1.33 M Ω , 1%, 1/4 W, Thick Film, 1206	MCR18EZH1334	Rohm
33	1	RV1	275 V, 80J, 10 mm, RADIAL	ERZ-V10D431	Panasonic
34	1	T1	Bobbin, RM10, Vertical, 5 pins Transformer	P-1031 PNK-41730	Pin Shine Premier Magnetics
35	1	U1	LinkSwitch, eSIP	LNK417EG	Power Integrations
36	1	VR1	200 V, 5 W, 5%, TVS, DO204AC (DO-15)	P6KE200ARLG	On Semi
37	1	VR2	39 V, 5%, 500 mW, DO-213AA (MELF)	ZMM5259B-7	Diodes, Inc.

8 Transformer Specification

8.1 Electrical Diagram

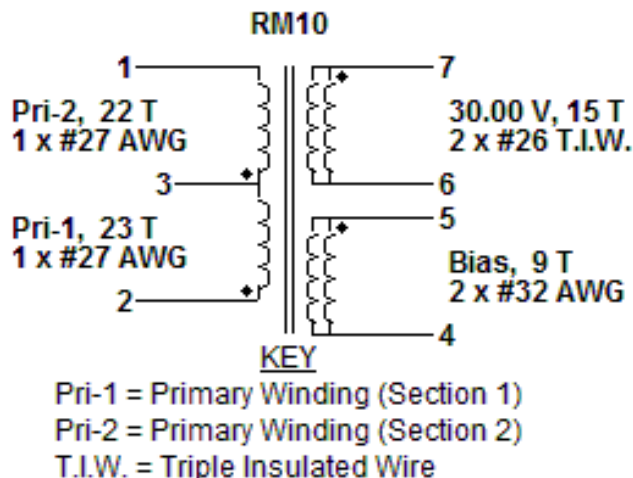


Figure 6 – Transformer Electrical Diagram.

8.2 Electrical Specifications

Electrical Strength	1 second, 60 Hz, from pins 1, 2, 3, 4, 5 to pins FL1, FL2.	3000 VAC
Primary Inductance	Measured at 1 V pk-pk, typical switching frequency, between pin 1 to pin 2, with all other windings open.	1.6 mH \pm 10%
Resonant Frequency	Pins 1- 2, all other windings open.	750 kHz (Min.)
Primary Leakage Inductance	Measured between pin 1 to pin 2, with all other windings shorted.	40 μ H \pm 10%

8.3 Materials

Item	Description
[1]	Core: PC95RM10Z-12 or Equivalent, gapped for ALG of 792 nH/t ² .
[2]	Bobbin: Generic, 5 primary + 0 secondary.
[3]	Barrier Tape: Polyester film [1 mil (25 μ m) base thickness], 10.00 mm wide.
[4]	Separation Tape: Polyester film [1 mil (25 μ m) base thickness], 10.0 mm wide.
[5]	Varnish.
[6]	Magnet Wire: #27 AWG, Solderable Double Coated.
[7]	Triple Insulated Wire: #26 AWG.
[8]	Magnet Wire: #32 AWG, Solderable Double Coated.
[9]	Clip: CLI/P-RM10/I.

8.4 Transformer Build Diagram

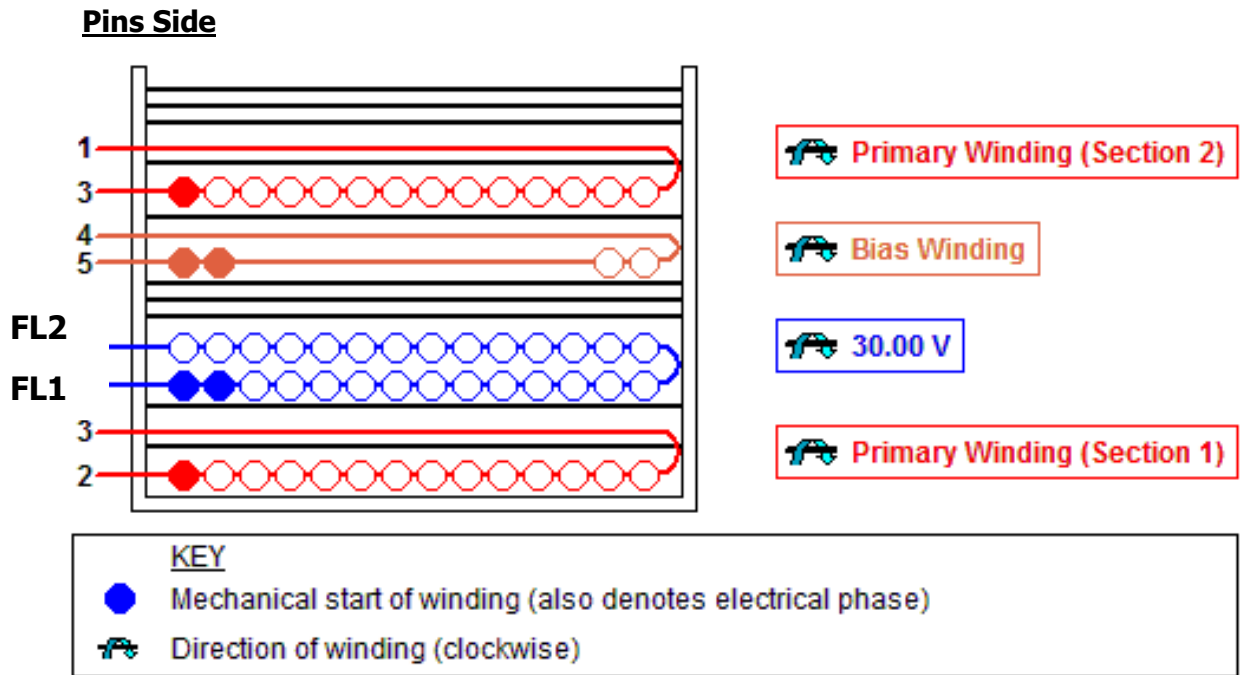


Figure 7 – Transformer Build Diagram.

8.5 Transformer Construction

Bobbin Preparation	Place the bobbin item [2] on the mandrel such that pin side on the left side. Winding direction is the clockwise direction.
Primary Winding 1	Start on pin 2 and wind 23 turns (x1 filar) of item [6] in 1 layer(s) from left to right. Add 1 layer of tape, item [4], in between each primary winding layer. On the final layer, spread the winding evenly across entire bobbin. Finish this winding on pin 3.
Insulation	Add 1 layer of tape, item [3], for insulation.
Secondary Winding	Start on pin FL1 and wind 15 turns (x2 filar) of item [7]. Spread the winding evenly across entire bobbin. Wind in same rotational direction as primary winding. Finish this winding on pin FL2.
Insulation	Add 3 layers of tape, item [3], for insulation.
Bias Winding	Start on pin 5 and wind 9 turns (x2 filar) of item [8]. Wind in same rotational direction as primary winding. Spread the winding evenly across entire bobbin. Finish this winding on pin(s) 4.
Insulation	Add 1 layer of tape, item [3], for insulation.
Primary Winding 2	Start on pin 3 and wind 22 turns (x1 filar) of item [6] in 1 layer(s) from left to right. Add 1 layer of tape, item [4], in between each primary winding layer. On the final layer, spread the winding evenly across entire bobbin. Finish this winding on pin 1.
Insulation	Add 3 layers of tape, item [3], for insulation.
Final Assembly	Assemble and secure core halves. Item [1] with Item [9]. Dip varnish uniformly in item [5]. Do not vacuum impregnate.

9 Transformer Design Spreadsheet

ACDC_LinkSwitch-PH_011111; Rev.1.2; Copyright Power Integrations 2011	INPUT	INFO	OUTPUT	UNIT	LinkSwitch-PH_011111: Flyback Transformer Design Spreadsheet
ENTER APPLICATION VARIABLES					
Dimming required	NO		NO		Select 'YES' option if dimming is required. Otherwise select 'NO'.
VACMIN			90	V	Minimum AC Input Voltage
VACMAX			265	V	Maximum AC input voltage
fL			50	Hz	AC Mains Frequency
VO	30.00			V	Typical output voltage of LED string at full load
VO_MAX			33.00	V	Maximum expected LED string Voltage.
VO_MIN			27.00	V	Minimum expected LED string Voltage.
V_OVP			36.30	V	Over-voltage protection setpoint
IO	0.50				Typical full load LED current
PO			15.0	W	!!! For Universal Input reduce Continuous Output Power PO_CONT below 12W (or use larger LinkSwitch-PH)
n	0.90		0.9		Estimated efficiency of operation
VB	17		17	V	Bias Voltage
ENTER LinkSwitch-PH VARIABLES					
LinkSwitch-PH	LNK417			Universal	115 Doubled/230V
Chosen Device		LNK417	Power Out	12W	5.5W
Current Limit Mode	RED		RED		Select "RED" for reduced Current Limit mode or "FULL" for Full current limit mode
ILIMITMIN			1.42	A	Minimum current limit
ILIMITMAX			1.66	A	Maximum current limit
fS			66000	Hz	Switching Frequency
fSmin			62000	Hz	Minimum Switching Frequency
fSmax			70000	Hz	Maximum Switching Frequency
IV			38.7	uA	V pin current
RV			3.909	M-ohms	Upper V pin resistor
RV2			1.402	M-ohms	Lower V pin resistor
IFB			126.3	uA	FB pin current (85 uA < IFB < 210 uA)
RFB1			110.8	k-ohms	FB pin resistor
VDS			10	V	LinkSwitch-PH on-state Drain to Source Voltage
VD	0.50			V	Output Winding Diode Forward Voltage Drop (0.5 V for Schottky and 0.8 V for PN diode)
VDB	0.70			V	Bias Winding Diode Forward Voltage Drop
Key Design Parameters					
KP	0.78		0.78		Ripple to Peak Current Ratio (For PF > 0.9, 0.4 < KP < 0.9)
LP			1603	uH	Primary Inductance
VOR	91.50		91.5	V	Reflected Output Voltage.
Expected IO (average)			0.48	A	Expected Average Output Current
KP_VACMAX			1.02		Expected ripple current ratio at VACMAX
TON_MIN			2.28	us	Minimum on time at maximum AC input voltage
PCLAMP			0.12	W	Estimated dissipation in primary clamp
ENTER TRANSFORMER CORE/CONSTRUCTION VARIABLES					
Core Type	RM10		RM10		
Bobbin		RM10_BOBBIN		P/N:	CPV-RM10-1S-12PD
AE			0.966	cm^2	Core Effective Cross Sectional Area
LE			4.46	cm	Core Effective Path Length
AL			4050	nH/T^2	Ungapped Core Effective Inductance
BW	10.0		10	mm	Bobbin Physical Winding Width



M			0	mm	Safety Margin Width (Half the Primary to Secondary Creepage Distance)
L	2.00		2		Number of Primary Layers
NS	15		15		Number of Secondary Turns
DC INPUT VOLTAGE PARAMETERS					
VMIN			127	V	Peak input voltage at VACMIN
VMAX			375	V	Peak input voltage at VACMAX
CURRENT WAVEFORM SHAPE PARAMETERS					
DMAX			0.44		Minimum duty cycle at peak of VACMIN
Iavg			0.17	A	Average Primary Current
IP			0.81	A	Peak Primary Current (calculated at minimum input voltage VACMIN)
IRMS			0.28	A	Primary RMS Current (calculated at minimum input voltage VACMIN)
TRANSFORMER PRIMARY DESIGN PARAMETERS					
LP			1603	uH	Primary Inductance
NP			45		Primary Winding Number of Turns
NB			9		Bias Winding Number of Turns
ALG			792	nH/T ²	Gapped Core Effective Inductance
BM			2986	Gauss	Maximum Flux Density at PO, VMIN (BM<3100)
BP			3613	Gauss	Peak Flux Density (BP<3700)
BAC			1164	Gauss	AC Flux Density for Core Loss Curves (0.5 X Peak to Peak)
ur			1488		Relative Permeability of Ungapped Core
LG			0.12	mm	Gap Length (Lg > 0.1 mm)
BWE			20	mm	Effective Bobbin Width
OD			0.44	mm	Maximum Primary Wire Diameter including insulation
INS			0.06	mm	Estimated Total Insulation Thickness (= 2 * film thickness)
DIA			0.38	mm	Bare conductor diameter
AWG			27	AWG	Primary Wire Gauge (Rounded to next smaller standard AWG value)
CM			203	Cmils	Bare conductor effective area in circular mils
CMA		<i>Warning</i>	724	Cmils/Amp	!!! DECREASE CMA (200 < CMA < 600) Decrease L(primary layers),increase NS,smaller Core
LP_TOL			10		Tolerance of primary inductance
TRANSFORMER SECONDARY DESIGN PARAMETERS (SINGLE OUTPUT EQUIVALENT)					
Lumped parameters					
ISP			2.43	A	Peak Secondary Current
ISRMS			0.90	A	Secondary RMS Current
IRIPPLE			0.75	A	Output Capacitor RMS Ripple Current
CMS			180	Cmils	Secondary Bare Conductor minimum circular mils
AWGS			27	AWG	Secondary Wire Gauge (Rounded up to next larger standard AWG value)
DIAS			0.36	mm	Secondary Minimum Bare Conductor Diameter
ODS			0.67	mm	Secondary Maximum Outside Diameter for Triple Insulated Wire
VOLTAGE STRESS PARAMETERS					
VDRAIN			566	V	Estimated Maximum Drain Voltage assuming maximum LED string voltage (Includes Effect of Leakage Inductance)
PIVS			161	V	Output Rectifier Maximum Peak Inverse Voltage (calculated at VOVP, excludes leakage inductance spike)
PIVB			93	V	Bias Rectifier Maximum Peak Inverse Voltage (calculated at VOVP, excludes leakage inductance spike)
FINE TUNING (Enter measured values from prototype)					

V pin Resistor Fine Tuning					
RV1			3.91	M-ohms	Upper V Pin Resistor Value
RV2			1.40	M-ohms	Lower V Pin Resistor Value
VAC1			115.0	V	Test Input Voltage Condition1
VAC2			230.0	V	Test Input Voltage Condition2
IO_VAC1			0.50	A	Measured Output Current at VAC1
IO_VAC2			0.50	A	Measured Output Current at VAC2
RV1 (new)			3.91	M-ohms	New RV1
RV2 (new)			1.40	M-ohms	New RV2
V_OV			318.3	V	Typical AC input voltage at which OV shutdown will be triggered
V_UV			70.8	V	Typical AC input voltage beyond which power supply can startup
FB pin resistor Fine Tuning					
RFB1			111	k-ohms	Upper FB Pin Resistor Value
RFB2			1E+012	k-ohms	Lower FB Pin Resistor Value
VB1			15.3	V	Test Bias Voltage Condition1
VB2			18.7	V	Test Bias Voltage Condition2
IO1			0.50	A	Measured Output Current at Vb1
IO2			0.50	A	Measured Output Current at Vb2
RFB1 (new)			110.8	k-ohms	New RFB1
RFB2(new)			1.00E+12	k-ohms	New RFB2



10 Performance Data

All measurements performed at room temperature.

10.1 Efficiency vs. Line and Output (LED String) Voltage

10.1.1 27 V

Input		Input Measurement					Load Measurement			Calculation		
VAC (V _{RMS})	Freq (Hz)	V _{IN} (V _{RMS})	I _{IN} (mA _{RMS})	P _{IN} (W)	PF	%ATHD	V _{OUT} (V _{DC})	I _{OUT} (mA _{DC})	P _{OUT} (W)	P _{CAL} (W)	Efficiency (%)	Loss (W)
90	60	89.88	194.41	17.30	0.99	14.07	29.81	500.21	15.43	14.91	89.17	1.87
100	60	99.92	174.93	17.28	0.99	15.05	29.77	504.49	15.52	15.02	89.84	1.76
115	60	114.94	151.83	17.21	0.99	16.22	29.75	506.53	15.57	15.07	90.46	1.64
135	60	134.94	129.71	17.16	0.98	18.36	29.75	508.64	15.61	15.13	90.95	1.55
190	50	189.92	93.54	17.10	0.96	23.7	29.75	510.32	15.63	15.18	91.41	1.47
210	50	209.88	84.97	16.98	0.95	25.43	29.73	507.92	15.53	15.10	91.45	1.45
230	50	229.95	77.75	16.80	0.94	26.78	29.69	503.62	15.36	14.95	91.42	1.44
265	50	264.96	67.69	16.40	0.91	27.57	29.64	492.64	14.98	14.60	91.34	1.42

10.1.2 30 V

Input		Input Measurement					Load Measurement			Calculation		
VAC (V _{RMS})	Freq (Hz)	V _{IN} (V _{RMS})	I _{IN} (mA _{RMS})	P _{IN} (W)	PF	%ATHD	V _{OUT} (V _{DC})	I _{OUT} (mA _{DC})	P _{OUT} (W)	P _{CAL} (W)	Efficiency (%)	Loss (W)
90	60	89.88	176.89	15.72	0.99	14.84	26.80	506.33	14.03	13.57	89.26	1.69
100	60	99.93	158.62	15.65	0.99	15.91	26.76	509.11	14.08	13.62	89.98	1.57
115	60	114.95	137.68	15.58	0.98	17.1	26.75	510.73	14.11	13.66	90.56	1.47
135	60	134.95	117.74	15.54	0.98	19.29	26.75	512.59	14.14	13.71	91.01	1.40
190	50	189.92	84.94	15.46	0.96	24.09	26.75	513.37	14.13	13.73	91.41	1.33
210	50	209.87	77.16	15.33	0.95	25.73	26.73	509.91	14.01	13.63	91.40	1.32
230	50	229.95	70.66	15.16	0.93	26.84	26.70	504.77	13.85	13.48	91.33	1.31
265	50	264.96	61.76	14.78	0.90	27.5	26.65	492.53	13.47	13.13	91.14	1.31

10.1.3 33 V

Input		Input Measurement					Load Measurement			Calculation		
VAC (V _{RMS})	Freq (Hz)	V _{IN} (V _{RMS})	I _{IN} (mA _{RMS})	P _{IN} (W)	PF	%ATHD	V _{OUT} (V _{DC})	I _{OUT} (mA _{DC})	P _{OUT} (W)	P _{CAL} (W)	Efficiency (%)	Loss (W)
90	60	89.89	221.24	19.71	0.99	13.22	32.58	519.63	17.53	16.93	88.93	2.18
100	60	99.93	196.62	19.45	0.99	14.12	32.52	518.61	17.45	16.86	89.70	2.00
115	60	114.95	168.61	19.15	0.99	15.31	32.48	515.51	17.31	16.75	90.41	1.84
135	60	134.95	142.57	18.92	0.98	17.25	32.47	513.47	17.21	16.67	90.97	1.71
190	50	189.93	102.07	18.72	0.97	23.15	32.46	512.55	17.13	16.64	91.51	1.59
210	50	209.87	92.45	18.56	0.96	25.01	32.44	509.27	16.99	16.52	91.57	1.56
230	50	229.95	84.44	18.35	0.95	26.54	32.41	504.78	16.81	16.36	91.59	1.54
265	50	264.96	73.22	17.91	0.92	27.47	32.36	494.06	16.41	15.99	91.59	1.51

10.2 Efficiency

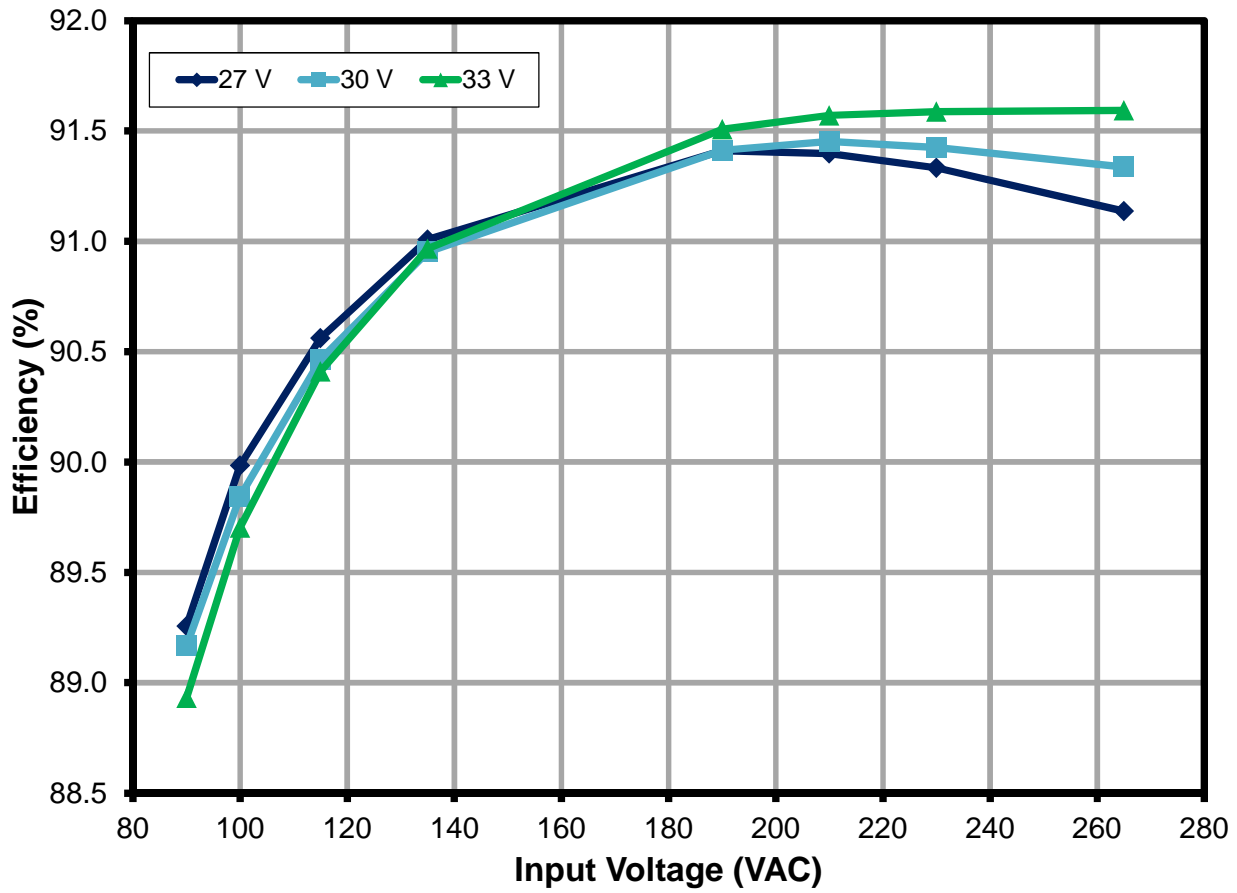


Figure 8 – Efficiency vs. Input Voltage, Room Temperature.

10.3 Regulation

10.3.1 Line Regulation

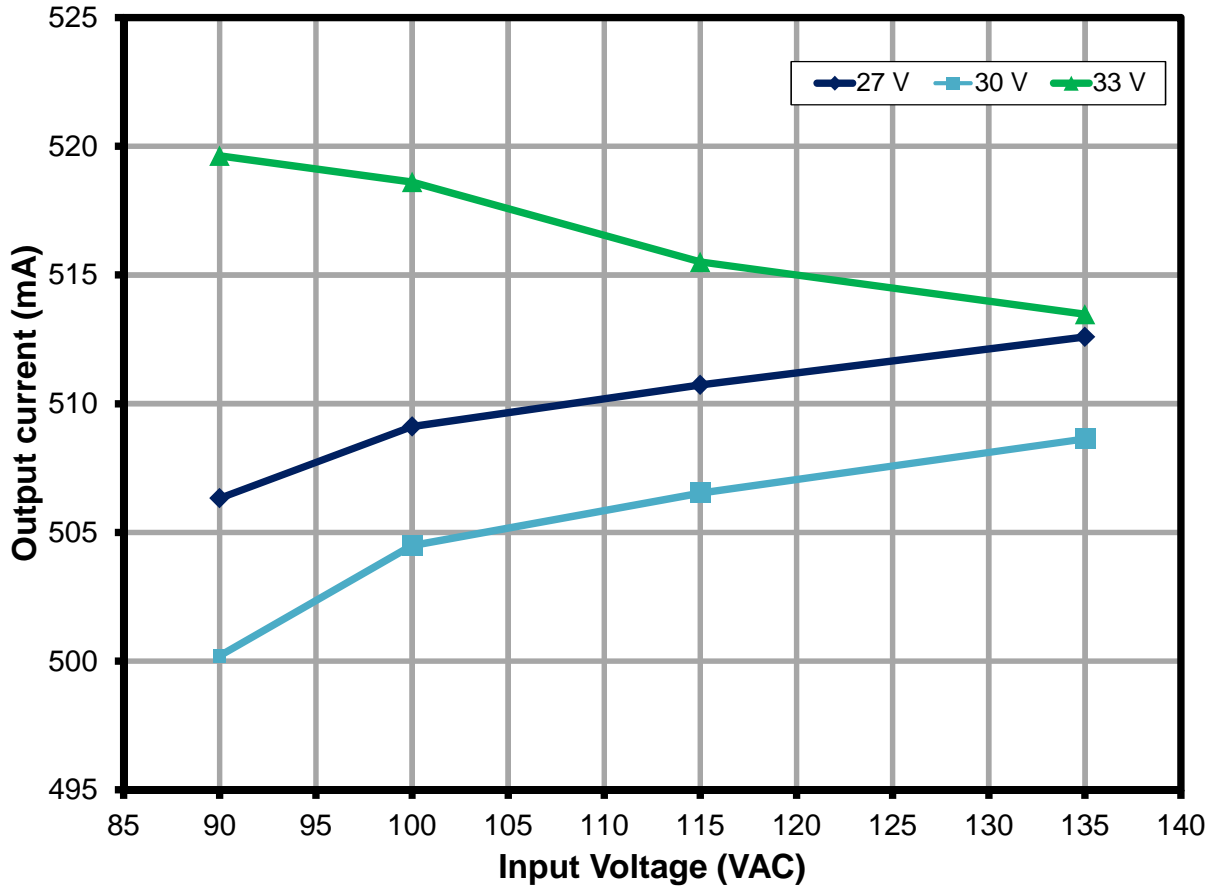


Figure 9 – Low-Line Regulation, Room Temperature, Full Load.



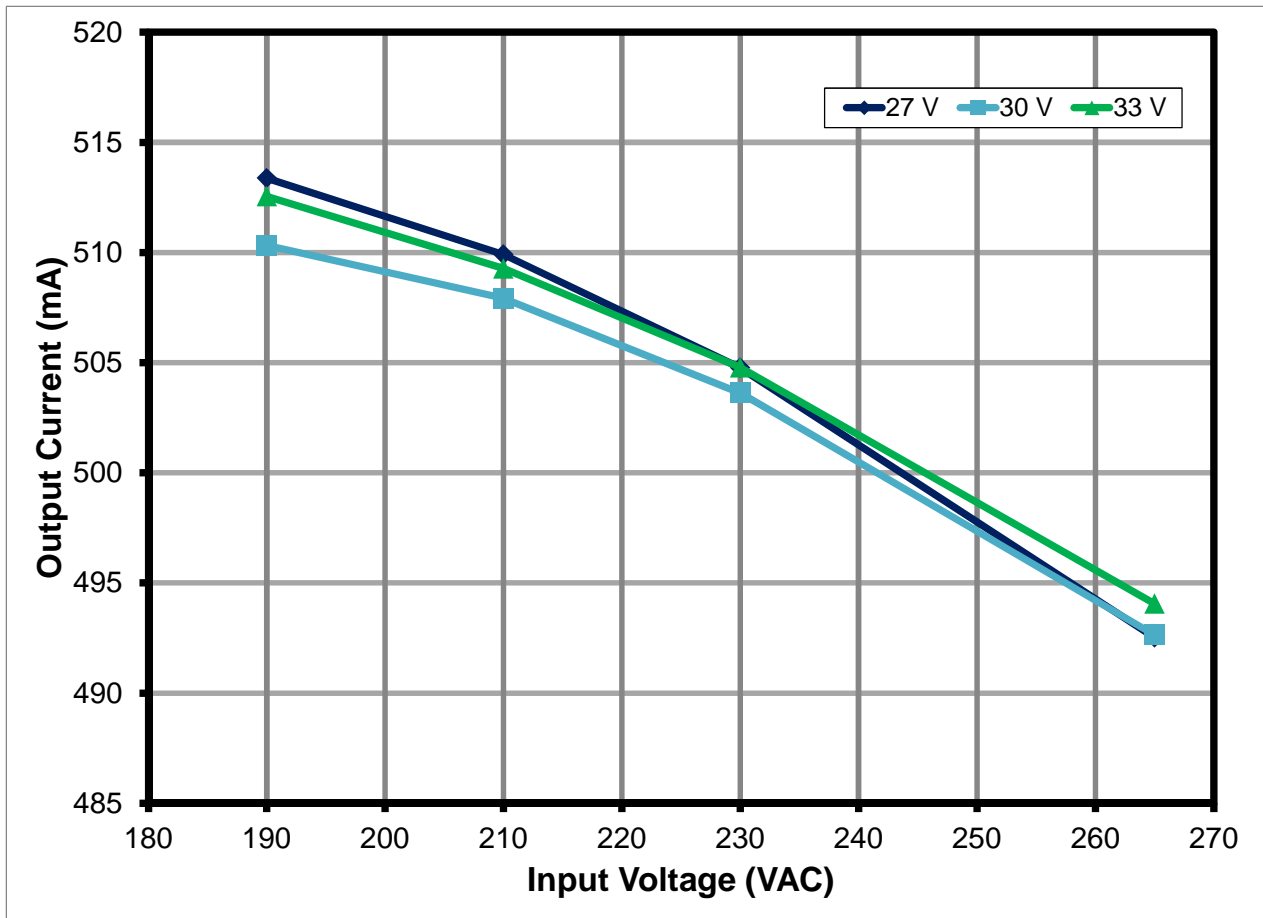


Figure 10 – High-Line Regulation, Room Temperature, Full Load.

11 Thermal Performance

Images captured after running for 30 minutes at room temperature (25 °C), full load (30 V, 500 mA). Hottest component is U1, which provides system thermal protection via internal hysteretic thermal shutdown.

11.1 $V_{IN} = 115 \text{ VAC}$

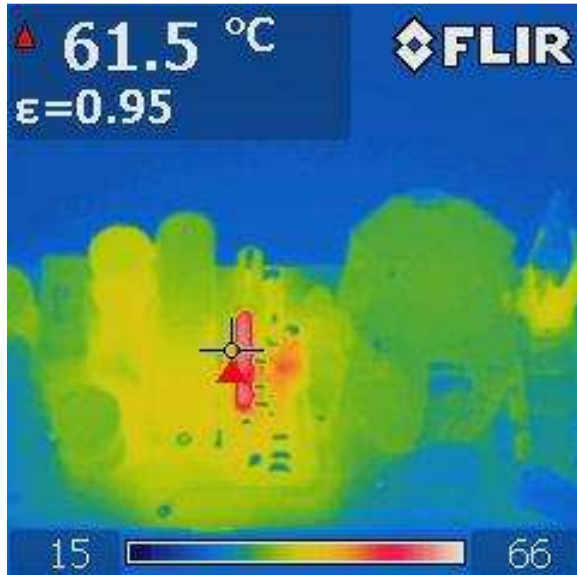


Figure 11 – Top Side.

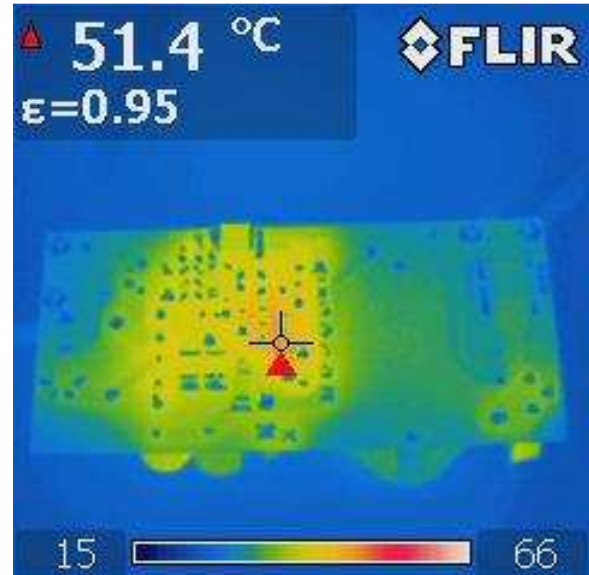


Figure 12 – Bottom Side.

11.2 $V_{IN} = 230 \text{ VAC}$

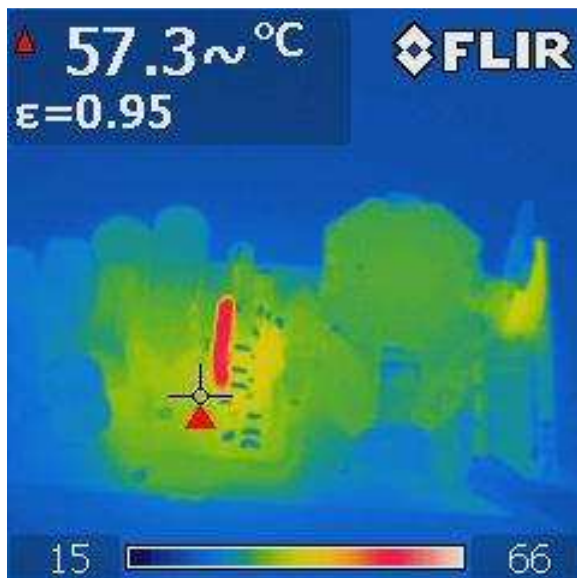


Figure 13 – Top Side.

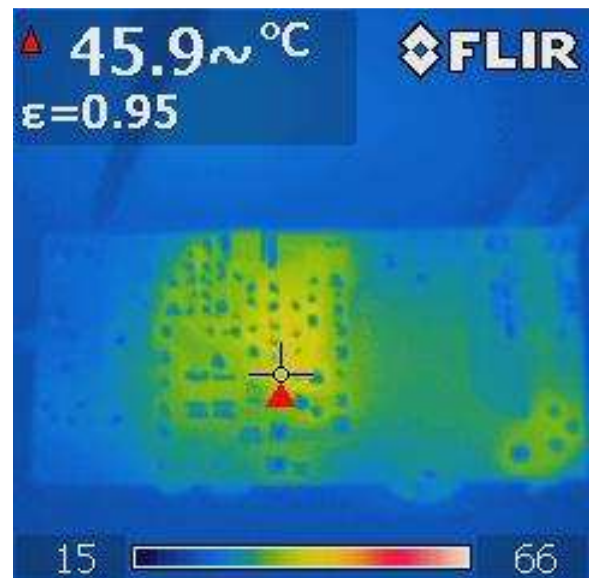


Figure 14 – Bottom Side.

12 Harmonic Current, PF and THD Data

12.1 Harmonic Current

The design passes Class C requirement.

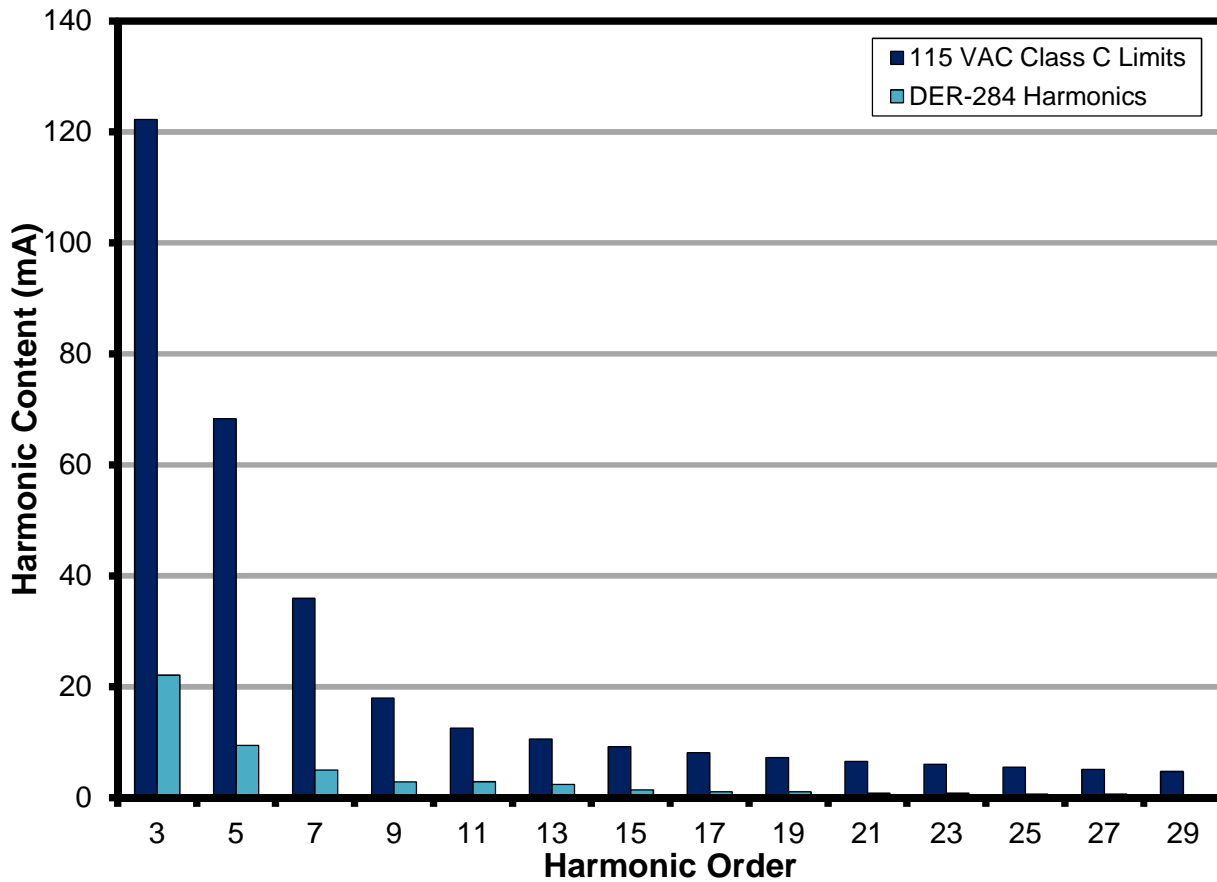


Figure 15 – 115 VAC Harmonic, Room Temperature, Full Load.

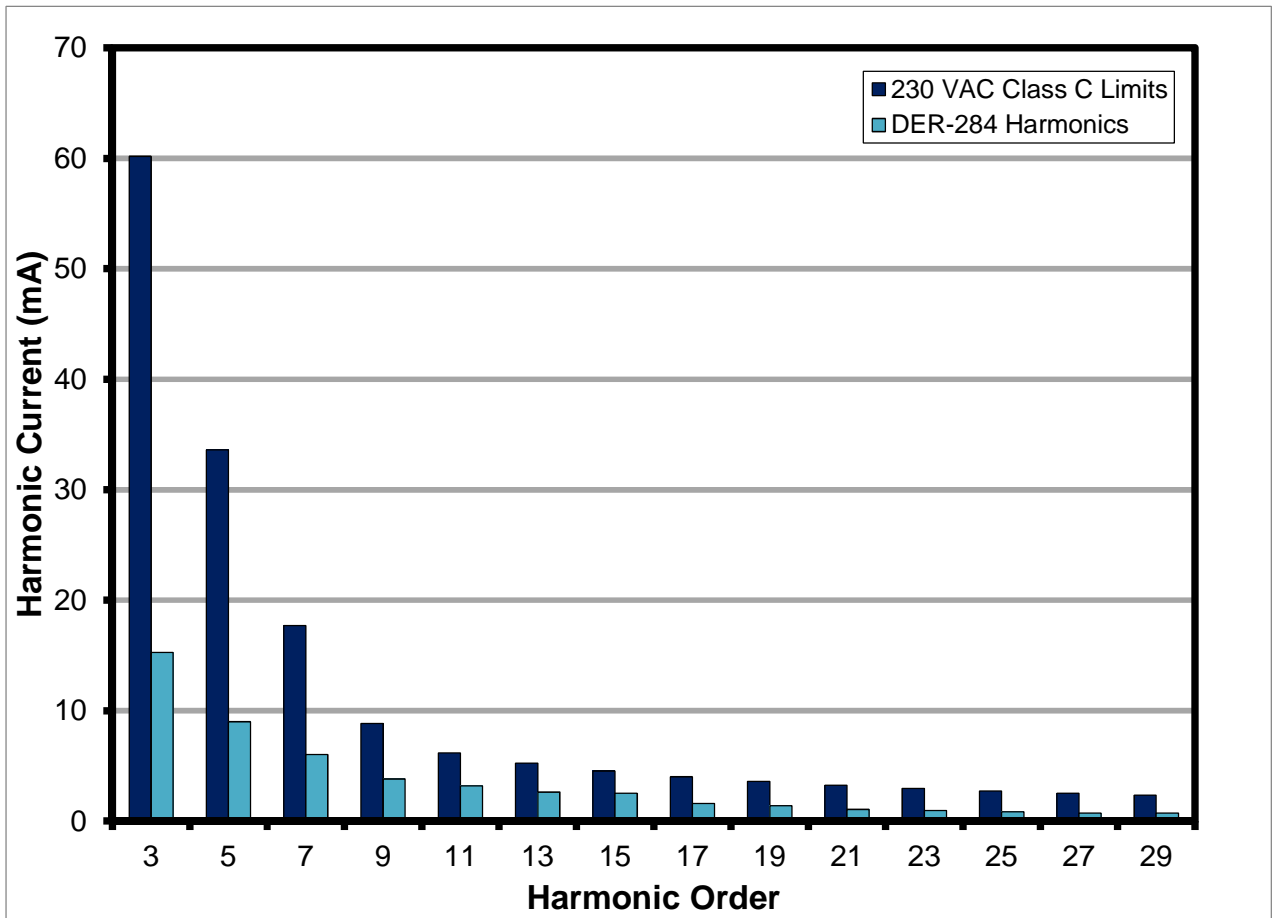


Figure 16 – 230 VAC Harmonic, Room Temperature, Full Load.

12.2 PF and THD Data

Input Voltage (VAC)	Power Factor	I _{THD} (%)
112	0.99	16
230	0.96	26



13 Waveforms

13.1 Input Line Voltage and Current

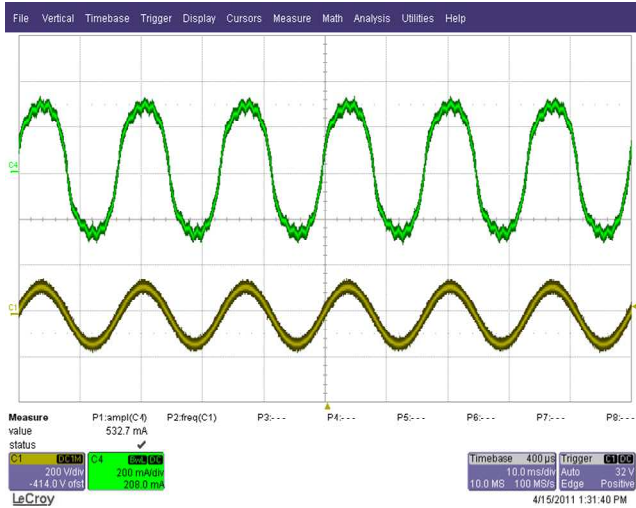


Figure 17 – 90 VAC, Full Load.
 Upper: I_{IN} , 0.2 A / div.
 Lower: V_{IN} , 200 V, 10 ms / div.

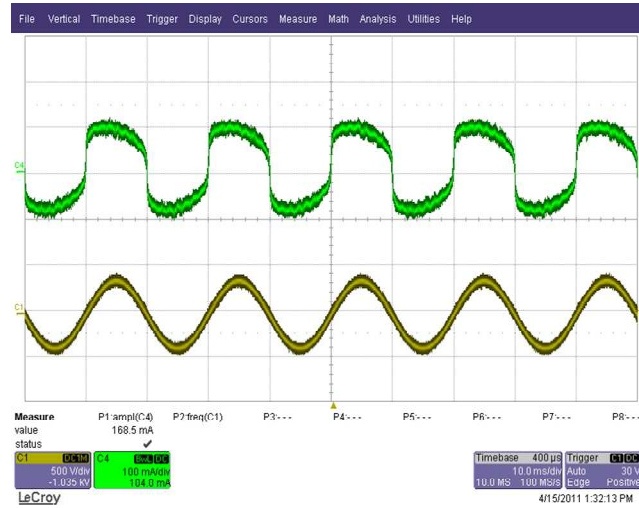


Figure 18 – 265 VAC, Full Load.
 Upper: I_{IN} , 0.1 A / div.
 Lower: V_{IN} , 500 V / div., 10 ms / div.

13.2 Drain Voltage and Current

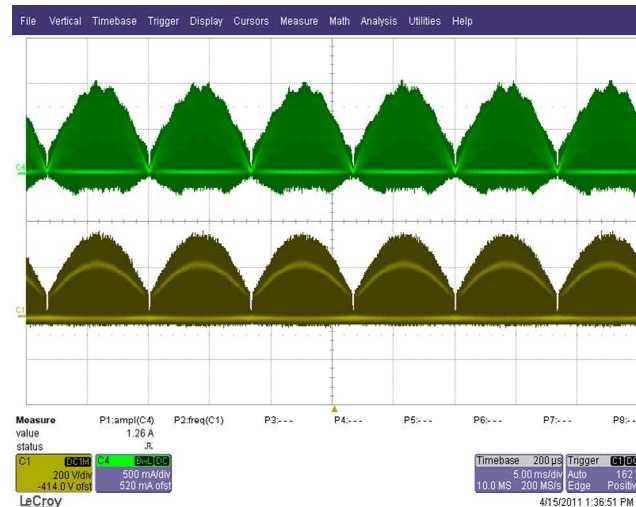


Figure 19 – 90 VAC, Full Load.
 Upper: I_{DRAIN} , 0.5 A / div.
 Lower: V_{DRAIN} , 200 V, 5 ms / div.

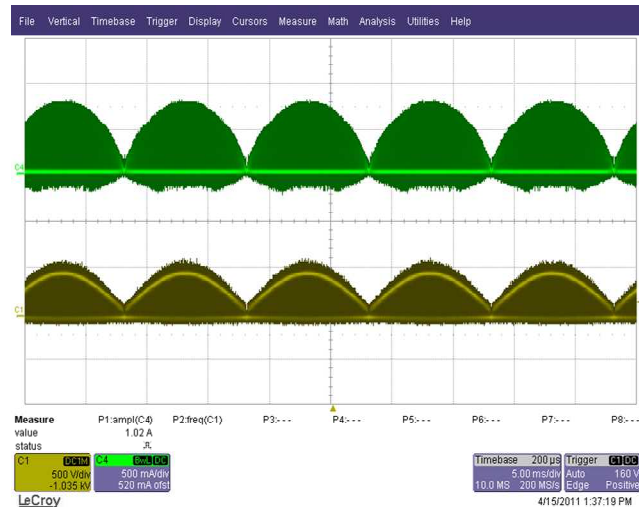


Figure 20 – 265 VAC, Full Load.
 Upper: I_{DRAIN} , 0.5 A / div.
 Lower: V_{DRAIN} , 500 V / div., 5 ms / div.

13.3 Output Voltage and Ripple Current



Figure 21 – 90 VAC, Full Load.
 Upper: I_{RIPPLE} , 0.5 A / div.
 Lower: V_{OUT} , 10 V, 5 ms / div.

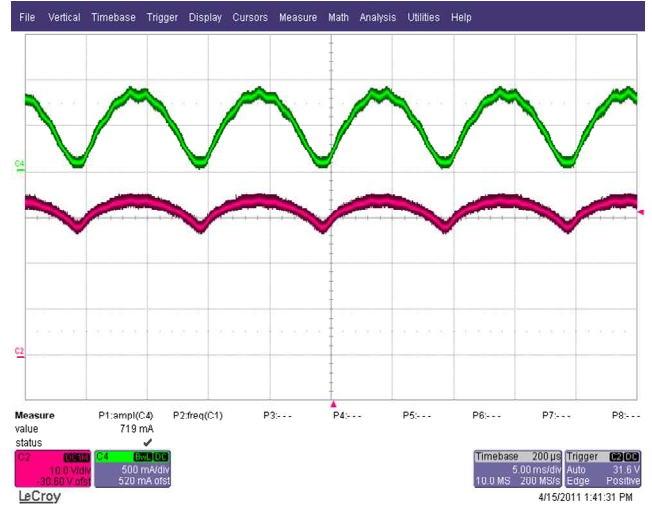


Figure 22 – 265 VAC, Full Load.
 Upper: I_{RIPPLE} , 0.5 A / div.
 Lower: V_{OUT} , 10 V, 5 ms / div.

13.4 Output Rectifier Voltage and Current

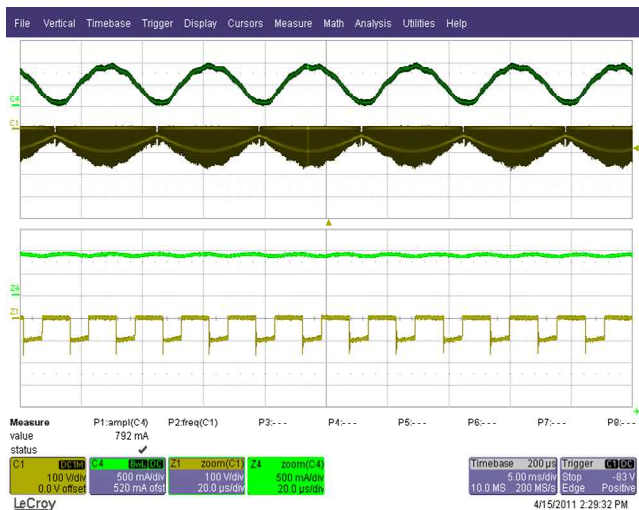


Figure 23 – 110 VAC, Full Load.
 Upper: I_{RIPPLE} , 0.5 A / div.
 Lower: V_{DIODE} , 100 V, 5 ms/200 μ s / div.

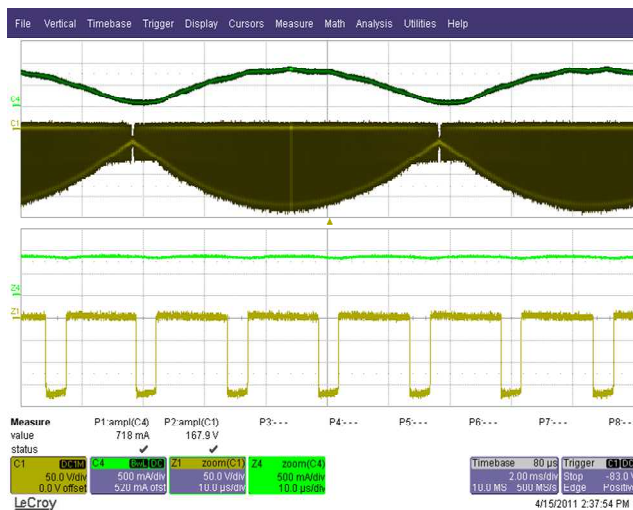


Figure 24 – 265 VAC, Full Load.
 Upper: I_{RIPPLE} , 0.5 A / div.
 Lower: V_{DIODE} , 50 V, 5 ms/200 μ s / div.

13.5 Output Voltage and Current Start-up Profile

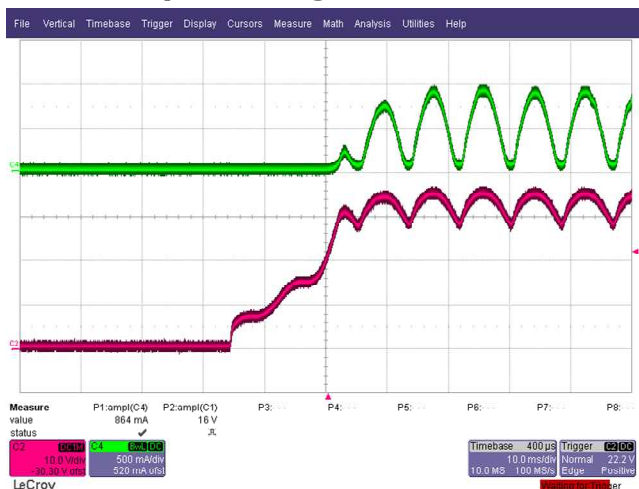


Figure 25 – 110 VAC, Full Load.
 Upper: I_{OUT} , 0.5 A / div.
 Lower: V_{OUT} , 10 V, 10 ms / div.

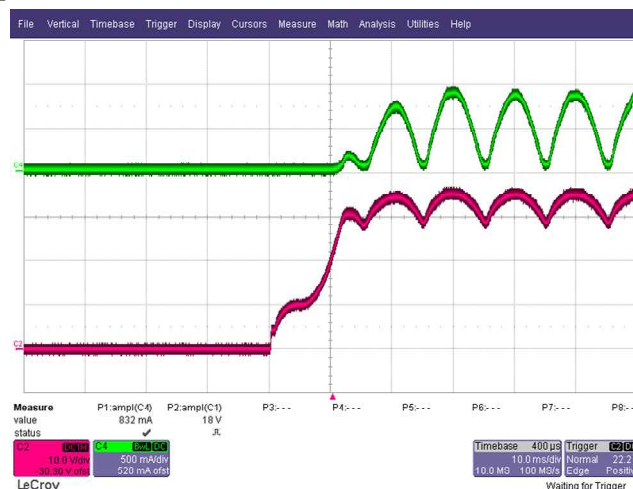


Figure 26 – 230 VAC, Full Load.
 Upper: I_{OUT} , 0.5 A / div.
 Lower: V_{OUT} , 10 V, 10 ms / div.

13.6 Output Current and Drain Voltage with Shorted Output



Figure 27 – 90 VAC, Full Load.
 Upper: I_{OUT} , 2 A / div.
 Lower: V_{DRAIN} , 200 V, 500 ms / div.



Figure 28 – 265 VAC, Full Load.
 Upper: I_{OUT} , 2 A / div.
 Lower: V_{DRAIN} , 200 V, 500 ms / div.

13.7 Output Current and Output Voltage with Shorted Output



Figure 29 – 110 VAC, Full Load.
 Upper: I_{OUT} , 1 A / div.
 Lower: V_{DRAIN} , 10 V, 1 s / div.

13.8 Open Load Output Voltage

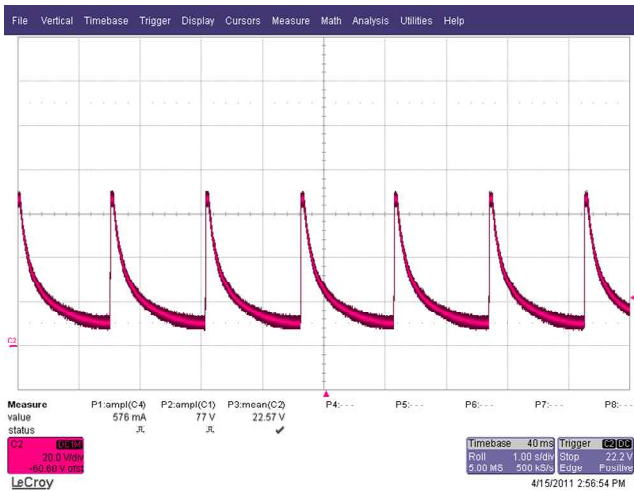


Figure 30 – Output Voltage: 110 VAC.
 V_{OUT} , 20 V / div., 1 s / div.

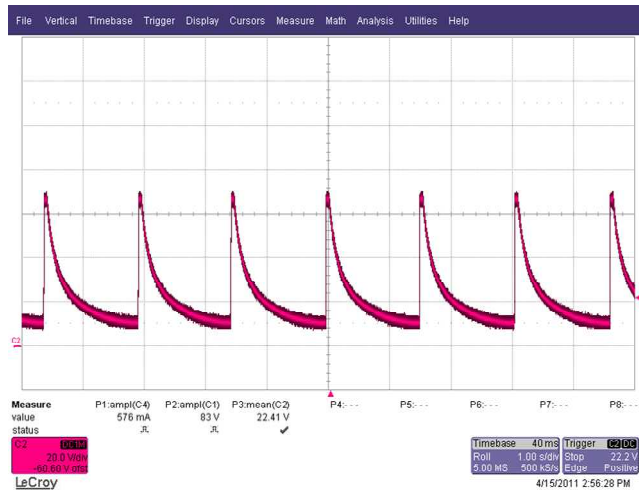


Figure 31 – Output Voltage: 230 VAC.
 V_{OUT} , 20 V / div., 1 s / div.

Note: Under open load conditions the OV shutdown function is designed to prevent the output voltage exceeding SELV limits (45 V). This is achieved, however the voltage rating of the output capacitors is exceeded which is acceptable for a fault condition.

14 Line Surge

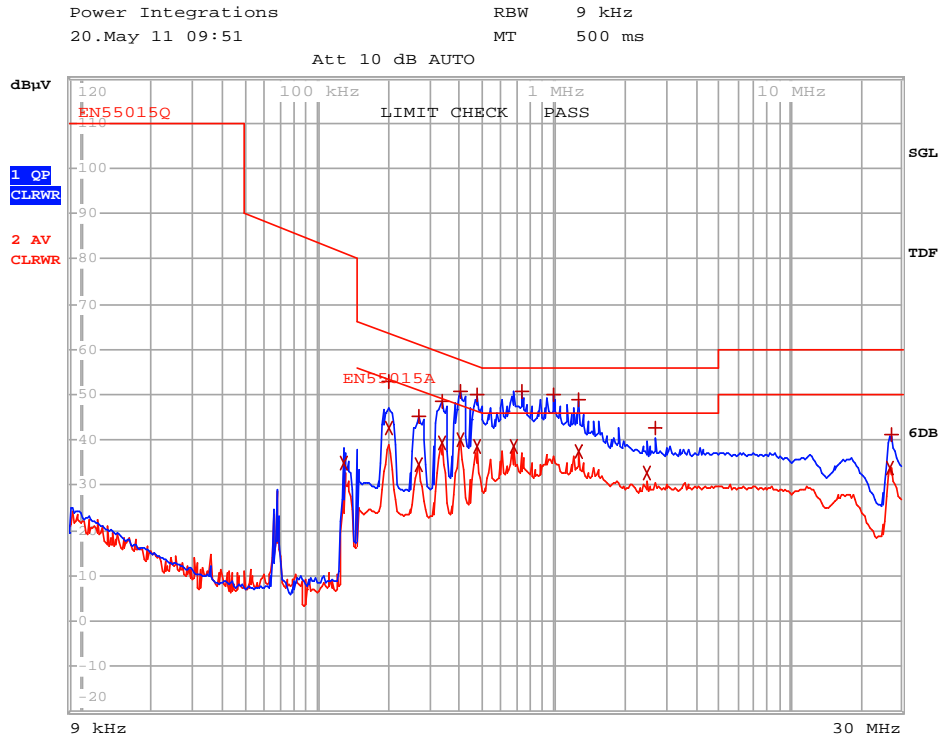
Differential and common input line 200 A ring wave testing was completed on a single test unit to IEC61000-4-5. Input voltage was set at 230 VAC / 60 Hz. Output was loaded at full load and operation was verified following each surge event.

Surge Level (V)	Input Voltage (VAC)	Injection Location	Injection Phase (°)	Test Result (Pass/Fail)
2500	230	L to N	90	Pass
2500	230	L to N	90	Pass
2500	230	L to PE	90	Pass
2500	230	L to PE	90	Pass
2500	230	N to PE	90	Pass
2500	230	N to PE	90	Pass

Unit passes under all test conditions.

15 Conducted EMI

Note: Refer to table for margin to standard – blue line is peak measurement but limit line is quasi peak.



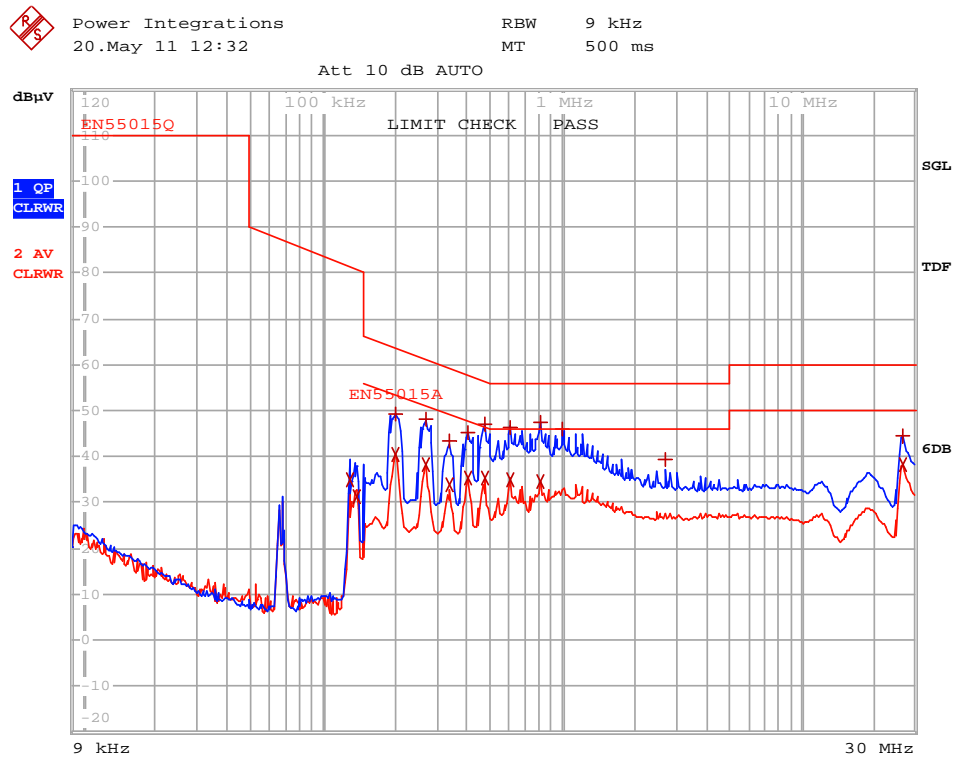
EDIT PEAK LIST (Final Measurement Results)

```
Trace1: EN55015Q
Trace2: EN55015A
Trace3: ---
```

TRACE	FREQUENCY	LEVEL dBµV	DELTA	LIMIT dB
2 Average	129.530094744 kHz	35.95	L1 gnd	
1 Quasi Peak	200.175581485 kHz	52.81	N gnd	-10.79
2 Average	202.1773373 kHz	42.64	N gnd	-10.87
1 Quasi Peak	269.806440381 kHz	45.18	L1 gnd	-15.93
2 Average	269.806440381 kHz	34.74	L1 gnd	-16.38
1 Quasi Peak	335.832355405 kHz	48.52	L1 gnd	-10.78
2 Average	335.832355405 kHz	39.33	L1 gnd	-9.97
1 Quasi Peak	401.705024172 kHz	50.78	L1 gnd	-7.03
2 Average	401.705024172 kHz	39.84	L1 gnd	-7.97
1 Quasi Peak	471.030732902 kHz	49.88	N gnd	-6.61
2 Average	471.030732902 kHz	38.39	N gnd	-8.09
1 Quasi Peak	673.936068749 kHz	50.60	L1 gnd	-5.39
2 Average	673.936068749 kHz	38.39	L1 gnd	-7.60
1 Quasi Peak	1.00339897152 MHz	49.91	L1 gnd	-6.08
1 Quasi Peak	1.27405044044 MHz	48.88	N gnd	-7.11
2 Average	1.27405044044 MHz	37.38	N gnd	-8.61
2 Average	2.48152506244 MHz	32.47	N gnd	-13.52
1 Quasi Peak	2.68713605405 MHz	42.58	N gnd	-13.41
1 Quasi Peak	26.4975442467 MHz	40.33	L1 gnd	-19.67
2 Average	26.4975442467 MHz	33.40	L1 gnd	-16.59

Figure 32 – Conducted EMI, Maximum Steady-State Load, 230 VAC, Line, 60 Hz, and EN55015 B Limits.





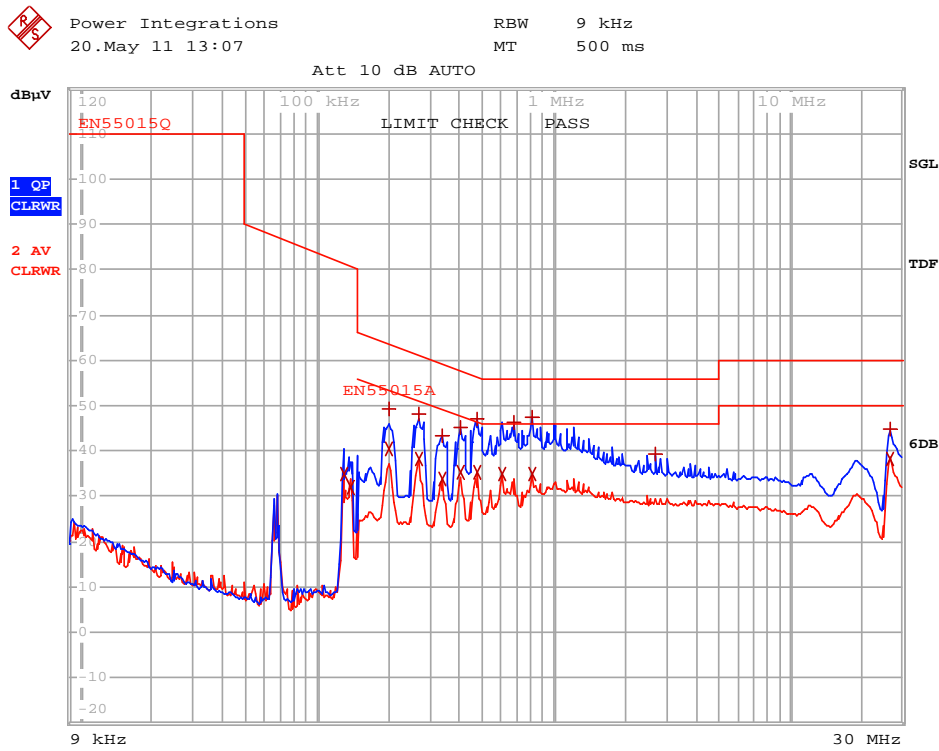
EDIT PEAK LIST (Final Measurement Results)

Trace1: EN55015Q
Trace2: EN55015A
Trace3: ---

TRACE	FREQUENCY	LEVEL dBµV	DELTA LIMIT dB
2 Average	129.530094744 kHz	34.89 N gnd	
2 Average	138.873793737 kHz	31.26 N gnd	
1 Quasi Peak	202.1773373 kHz	49.31 L1 gnd	-14.20
2 Average	202.1773373 kHz	40.53 L1 gnd	-12.99
1 Quasi Peak	269.806440381 kHz	48.00 L1 gnd	-13.12
2 Average	269.806440381 kHz	38.13 L1 gnd	-12.98
1 Quasi Peak	335.832355405 kHz	43.28 N gnd	-16.02
2 Average	335.832355405 kHz	33.71 N gnd	-15.58
1 Quasi Peak	401.705024172 kHz	45.29 L1 gnd	-12.52
2 Average	401.705024172 kHz	35.13 L1 gnd	-12.68
1 Quasi Peak	471.030732902 kHz	47.20 N gnd	-9.28
2 Average	471.030732902 kHz	35.35 N gnd	-11.13
1 Quasi Peak	604.06488251 kHz	46.47 L1 gnd	-9.52
2 Average	604.06488251 kHz	34.78 L1 gnd	-11.21
1 Quasi Peak	806.126927408 kHz	47.44 L1 gnd	-8.55
2 Average	806.126927408 kHz	34.72 L1 gnd	-11.28
1 Quasi Peak	1.00339897152 MHz	46.12 L1 gnd	-9.87
1 Quasi Peak	2.68713605405 MHz	39.24 N gnd	-16.75
1 Quasi Peak	26.4975442467 MHz	44.55 N gnd	-15.44
2 Average	26.4975442467 MHz	38.30 L1 gnd	-11.69

Figure 33 – Conducted EMI, Maximum Steady-State Load, 110 VAC, Line, 60 Hz, and EN55015 B Limits.





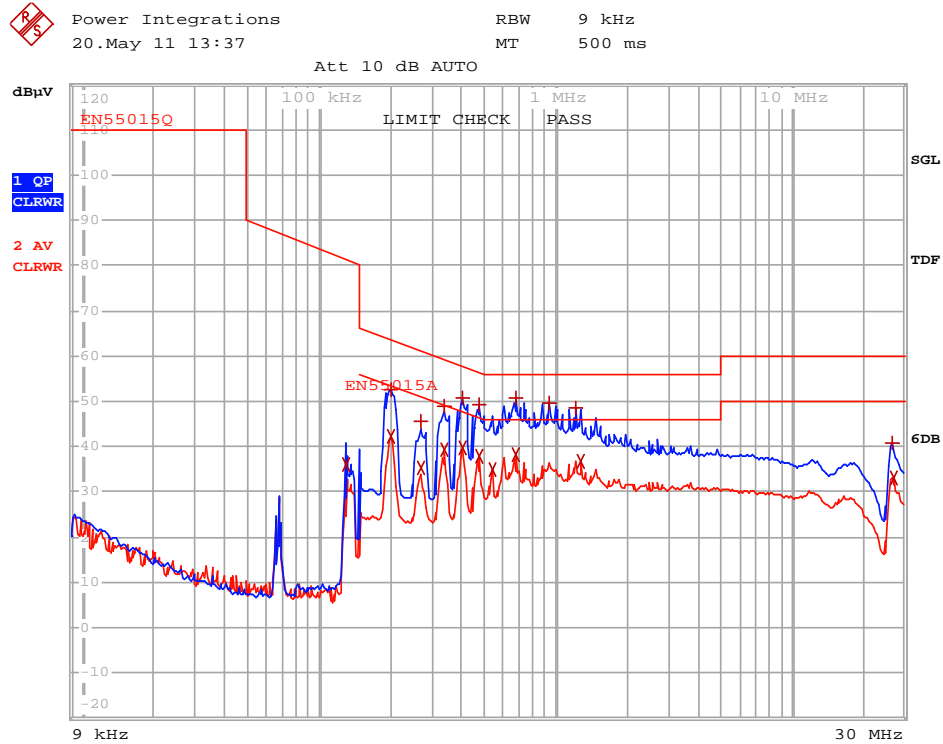
EDIT PEAK LIST (Final Measurement Results)

Trace1: EN55015Q
Trace2: EN55015A
Trace3: ---

TRACE	FREQUENCY	LEVEL dBµV	DELTA LIMIT dB
2 Average	129.530094744 kHz	35.08 N gnd	
2 Average	138.873793737 kHz	32.16 N gnd	
1 Quasi Peak	202.1773373 kHz	49.32 L1 gnd	-14.19
2 Average	202.1773373 kHz	40.56 L1 gnd	-12.96
1 Quasi Peak	269.806440381 kHz	48.00 L1 gnd	-13.12
2 Average	269.806440381 kHz	38.19 L1 gnd	-12.92
1 Quasi Peak	335.832355405 kHz	43.26 N gnd	-16.04
2 Average	335.832355405 kHz	33.71 N gnd	-15.58
1 Quasi Peak	401.705024172 kHz	45.34 L1 gnd	-12.47
2 Average	401.705024172 kHz	35.24 L1 gnd	-12.57
1 Quasi Peak	471.030732902 kHz	47.17 N gnd	-9.32
2 Average	471.030732902 kHz	35.36 N gnd	-11.13
2 Average	604.06488251 kHz	34.86 L1 gnd	-11.13
1 Quasi Peak	673.936068749 kHz	46.31 N gnd	-9.68
1 Quasi Peak	806.126927408 kHz	47.47 L1 gnd	-8.52
2 Average	806.126927408 kHz	34.78 L1 gnd	-11.21
1 Quasi Peak	2.68713605405 MHz	39.33 N gnd	-16.67
1 Quasi Peak	26.4975442467 MHz	44.69 L1 gnd	-15.30
2 Average	26.4975442467 MHz	38.39 L1 gnd	-11.60

Figure 34 – Conducted EMI, Maximum Steady-State Load, 110 VAC, Neutral, 60 Hz, and EN55015 B Limits.





EDIT PEAK LIST (Final Measurement Results)

Trace1: EN55015Q
Trace2: EN55015A
Trace3: ---

TRACE	FREQUENCY	LEVEL dBµV	DELTA	LIMIT dB
2 Average	129.530094744 kHz	35.87	N gnd	
1 Quasi Peak	202.1773373 kHz	52.66	N gnd	-10.85
2 Average	202.1773373 kHz	42.36	N gnd	-11.15
1 Quasi Peak	269.806440381 kHz	45.66	L1 gnd	-15.45
2 Average	269.806440381 kHz	35.44	L1 gnd	-15.68
1 Quasi Peak	335.832355405 kHz	48.74	L1 gnd	-10.56
2 Average	335.832355405 kHz	39.49	L1 gnd	-9.81
1 Quasi Peak	401.705024172 kHz	50.62	L1 gnd	-7.18
2 Average	401.705024172 kHz	39.57	N gnd	-8.24
1 Quasi Peak	471.030732902 kHz	49.08	N gnd	-7.40
2 Average	471.030732902 kHz	37.96	N gnd	-8.53
2 Average	536.076911993 kHz	34.96	N gnd	-11.03
1 Quasi Peak	673.936068749 kHz	50.80	L1 gnd	-5.19
2 Average	673.936068749 kHz	38.39	L1 gnd	-7.61
1 Quasi Peak	945.247220176 kHz	49.46	L1 gnd	-6.53
1 Quasi Peak	1.21221527836 MHz	48.43	N gnd	-7.57
2 Average	1.27405044044 MHz	36.86	N gnd	-9.13
1 Quasi Peak	26.4975442467 MHz	40.99	L1 gnd	-19.00
2 Average	26.7625196891 MHz	33.19	L1 gnd	-16.80

Figure 35 – Conducted EMI, Maximum Steady-State Load, 230 VAC, Neutral, 60 Hz, and EN55015 B Limits.



16 Revision History

Date	Author	Revision	Description and Changes	Reviewed
08-Jul-11	DK	1.0	Initial Release.	Apps and Mktg
30-Aug-12	DK	1.1	Corrected errors on transformer pin numbering.	
18-Sep-13	KM	1.2	PCB updated to Rev B to fix Q1.	
14-Jul-15	KM	1.3	Updated brand style and added transformer supplier.	



For the latest updates, visit our website: www.power.com

Power Integrations reserves the right to make changes to its products at any time to improve reliability or manufacturability. Power Integrations does not assume any liability arising from the use of any device or circuit described herein. POWER INTEGRATIONS MAKES NO WARRANTY HEREIN AND SPECIFICALLY DISCLAIMS ALL WARRANTIES INCLUDING, WITHOUT LIMITATION, THE IMPLIED WARRANTIES OF MERCHANTABILITY, FITNESS FOR A PARTICULAR PURPOSE, AND NON-INFRINGEMENT OF THIRD PARTY RIGHTS.

PATENT INFORMATION

The products and applications illustrated herein (including transformer construction and circuits' external to the products) may be covered by one or more U.S. and foreign patents, or potentially by pending U.S. and foreign patent applications assigned to Power Integrations. A complete list of Power Integrations' patents may be found at www.power.com. Power Integrations grants its customers a license under certain patent rights as set forth at <http://www.power.com/ip.htm>.

The PI Logo, TOPSwitch, TinySwitch, LinkSwitch, LYTSwitch, InnoSwitch, DPA-Switch, PeakSwitch, CAPZero, SENZero, LinkZero, HiperPFS, HiperTFS, HiperLCS, Qspeed, EcoSmart, Clampless, E-Shield, Filterfuse, FluxLink, StackFET, PI Expert and PI FACTS are trademarks of Power Integrations, Inc. Other trademarks are property of their respective companies. ©Copyright 2015 Power Integrations, Inc.

Power Integrations Worldwide Sales Support Locations

WORLD HEADQUARTERS

5245 Hellyer Avenue
San Jose, CA 95138, USA.
Main: +1-408-414-9200
Customer Service:
Phone: +1-408-414-9665
Fax: +1-408-414-9765
e-mail: usasales@power.com

GERMANY

Lindwurmstrasse 114
80337, Munich
Germany
Phone: +49-895-527-39110
Fax: +49-895-527-39200
e-mail: eurosales@power.com

JAPAN

Kosei Dai-3 Building
2-12-11, Shin-Yokohama,
Kohoku-ku, Yokohama-shi,
Kanagawa 222-0033
Japan
Phone: +81-45-471-1021
Fax: +81-45-471-3717
e-mail: japansales@power.com

TAIWAN

5F, No. 318, Nei Hu Rd.,
Sec. 1
Nei Hu District
Taipei 11493, Taiwan R.O.C.
Phone: +886-2-2659-4570
Fax: +886-2-2659-4550
e-mail: taiwansales@power.com

CHINA (SHANGHAI)

Rm 2410, Charity Plaza, No. 88,
North Caoxi Road,
Shanghai, PRC 200030
Phone: +86-21-6354-6323
Fax: +86-21-6354-6325
e-mail: chinasales@power.com

INDIA

#1, 14th Main Road
Vasanthanagar
Bangalore-560052
India
Phone: +91-80-4113-8020
Fax: +91-80-4113-8023
e-mail: indiasales@power.com

KOREA

RM 602, 6FL
Korea City Air Terminal B/D,
159-6
Samsung-Dong, Kangnam-Gu,
Seoul, 135-728 Korea
Phone: +82-2-2016-6610
Fax: +82-2-2016-6630
e-mail: koreasales@power.com

UK

First Floor, Unit 15, Meadway
Court, Rutherford Close,
Stevenage, Herts. SG1 2EF
United Kingdom
Phone: +44 (0) 1252-730-141
Fax: +44 (0) 1252-727-689
e-mail: eurosales@power.com

CHINA (SHENZHEN)

17/F, Hivac Building, No. 2, Keji
Nan 8th Road, Nanshan District,
Shenzhen, China, 518057
Phone: +86-755-8672-8689
Fax: +86-755-8672-8690
e-mail: chinasales@power.com

ITALY

Via Milanese 20, 3rd. Fl.
20099 Sesto San Giovanni
(MI) Italy
Phone: +39-024-550-8701
Fax: +39-028-928-6009
e-mail: eurosales@power.com

SINGAPORE

51 Newton Road,
#19-01/05 Goldhill Plaza
Singapore, 308900
Phone: +65-6358-2160
Fax: +65-6358-2015
e-mail: singaporesales@power.com

APPLICATIONS HOTLINE

World Wide +1-408-414-9660

APPLICATIONS FAX

World Wide +1-408-414-9760